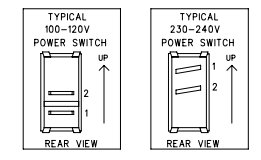


MODEL	VOLTAGE	TRANSFORMER	F1 FUSE RATING	POWER MODULE	POWER SUPPLY PCB
WORKINGPRO 700	100V	0064819000	T15A H 250V 3AG	0064754000	0068893000
	120V	0064818000	T15A H 250V 3AG		
	230V	0064817000	T8A L 250V 5mm		
WORKINGPRO 400 WORKINGPRO 2x10C	100V	0064823000	T8A H 250V 3AG	0064714000	0064753000
	120V	0064821000	T8A H 250V 3AG		
WORKINGPRO 15	100V	0064779000	F8A L 250V 3AG	0065466000	N/A
	120V	0064778000	F6A L 250V 3AG		
	230V	0064780000	F3.15A L 250V 5mm		



1. SEE SHEET 1 FOR TEST CONDITIONS
 NOTES: (UNLESS OTHERWISE NOTED)

THIS DOCUMENT CONTAINS INFORMATION OF A PROPRIETARY NATURE TO FENDER MUSICAL INSTRUMENTS AND IS SUBMITTED TO YOU IN CONFIDENCE AND SHALL NOT BE DISCLOSED OR TRANSMITTED TO OTHERS WITHOUT AUTHORIZATION FROM FENDER MUSICAL INSTRUMENTS.

SWR
 Corona, CA U.S.A.

CHECKED BY: _____
 DATE: _____
 APPROVED BY: _____
 DATE: _____
 DRAWN: G.McMillan [ENGR: S.Bankhead]
 DATABASE FILE: Z632SID.SCH

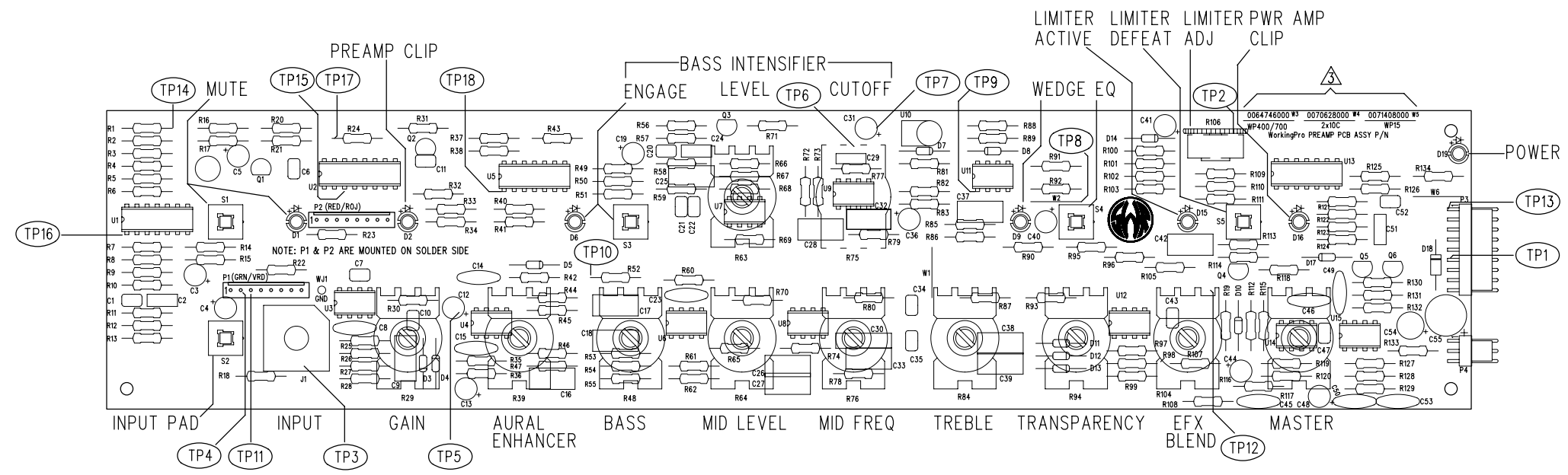
TITLE: SERVICE DIAGRAM, COMBINED (schematic)
 WORKINGPRO AMPLIFIERS
 PREAMP & CHASSIS WIRING

SIZE: **D** DRAWING NUMBER: **0064747000** REV. **D**

RELEASE DATE: 15-SEP-05 SHEET: 2 OF 3


8 7 6 5 4 3 2 1

REVISIONS			
REV.	DESCRIPTION	DATE	APPROVED
A	PR632	30-JUL-04	GMx
B	EC3147	30-SEP-04	GMx
C	EC3174	07-JAN-05	S.M.B.
D	PR673	15-SEP-05	S.M.B.



FILM/DWG: SERVICE DIAGRAM
 DATABASE: Z632P1.PCB DATE: 15-SEP-05

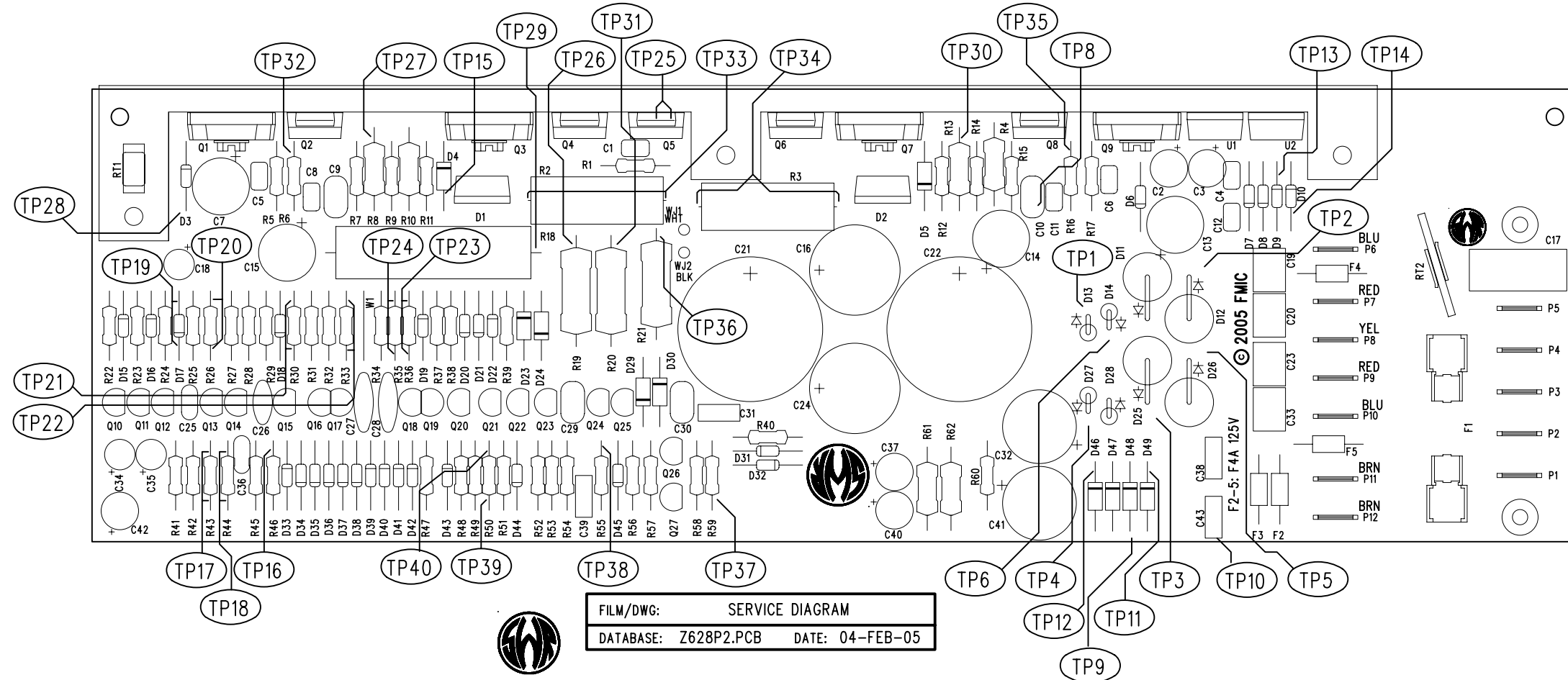
- UNLESS OTHERWISE NOTED:**
- SEE SHEET 1 FOR TEST CONDITIONS & TEST POINT VALUES
 - TEST POINT LOCATIONS ARE INDICATED ON PCB REAR SILK SCREEN
 - PRESENCE OF WIRE JUMPER (W3, W4, OR W5) DENOTES SPECIFIC WORKINGPRO PCB ASSEMBLY

THIS DOCUMENT CONTAINS INFORMATION OF A PROPRIETARY NATURE TO FENDER MUSICAL INSTRUMENTS AND IS SUBMITTED TO YOU IN CONFIDENCE AND SHALL NOT BE DISCLOSED OR TRANSMITTED TO OTHERS WITHOUT AUTHORIZATION FROM FENDER MUSICAL INSTRUMENTS.		 SWR Corona, CA U.S.A.	
CHECKED BY: _____ DATE: _____		TITLE: SERVICE DIAGRAM, COMBINED (PCB assy) WORKINGPRO AMPLIFIERS PREAMP	
APPROVED BY: _____ DATE: _____		SIZE C	DRAWING NUMBER 0064747000
DRAWN: G McMillan DATABASE FILE: Z632P1.PCB	ENGR: S Bankhead	RELEASE DATE: 15-SEP-05	REV. D SHEET 3 OF 3

8 7 6 5 4 3 2 1


REVISIONS

REV.	DESCRIPTION	DATE	APPROVED
A	PR628	20-SEP-04	J C S
B	EC 3192	04-FEB-05	J C S

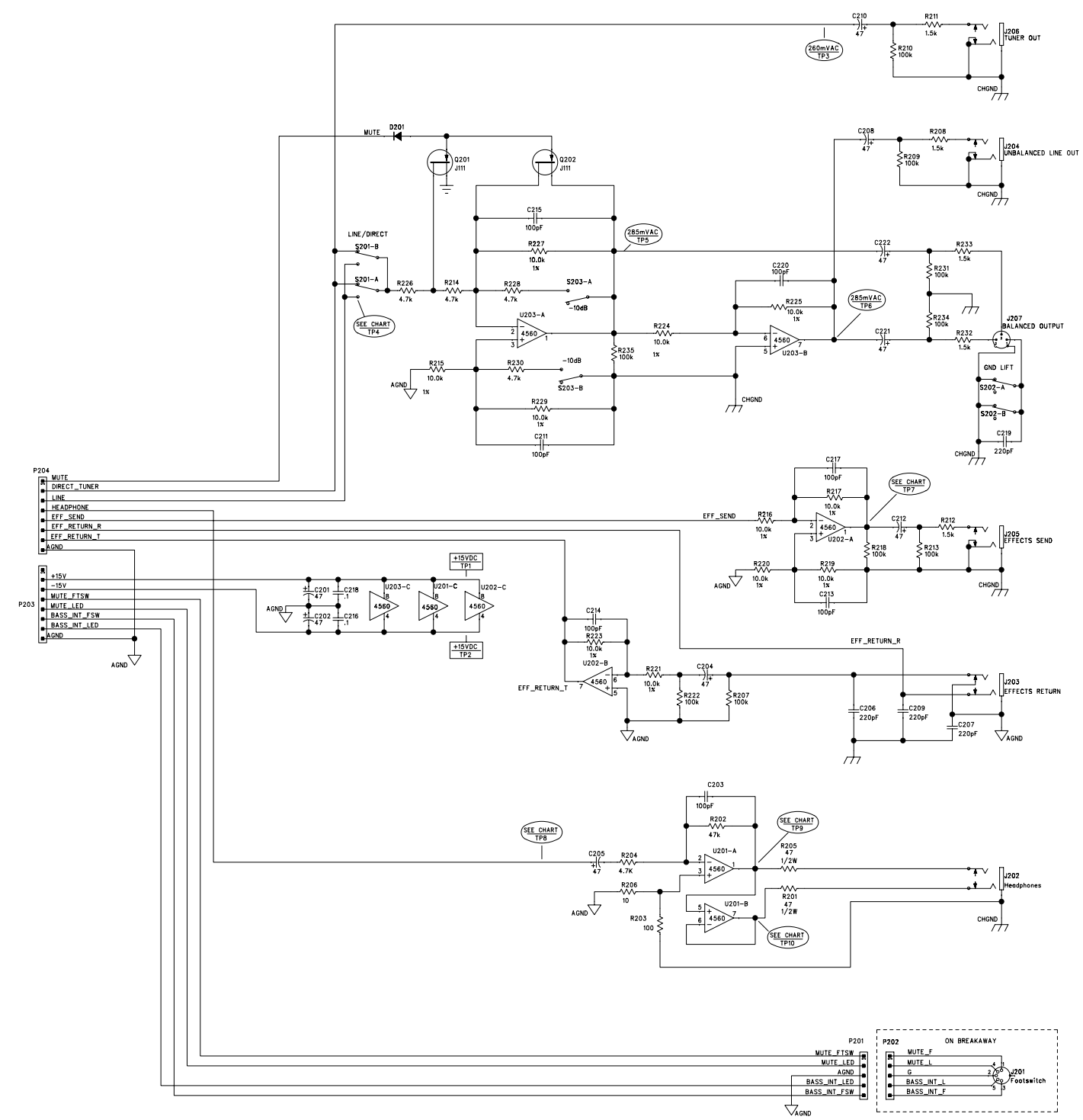


FILM/DWG: SERVICE DIAGRAM
 DATABASE: Z628P2.PCB DATE: 04-FEB-05

1. SEE SHEET 1 FOR TEST CONDITIONS AND TP VALUES.
 NOTES: (UNLESS OTHERWISE NOTED)

THIS DOCUMENT CONTAINS INFORMATION OF A PROPRIETARY NATURE TO FENDER MUSICAL INSTRUMENTS AND IS SUBMITTED TO YOU IN CONFIDENCE AND SHALL NOT BE DISCLOSED OR TRANSMITTED TO OTHERS WITHOUT AUTHORIZATION FROM FENDER MUSICAL INSTRUMENTS.		 Corona, CA U.S.A.	
CHECKED BY: _____ DATE: _____		TITLE: SERVICE DIAGRAM, COMBINED (PCB assy) SWR 200 WATT POWER AMP	
APPROVED BY: _____ DATE: _____		SIZE B	DRAWING NUMBER 0065467000
DRAWN: J. STILLWELL ENGR: J. STILLWELL		REV. B	
DATABASE FILE: Z628P2.PCB		RELEASE DATE: 20-SEP-04	SHEET 2 OF 2

REVISIONS			
REV.	DESCRIPTION	DATE	APPROVED
A	PR673	15 SEP 05	S.M.B.

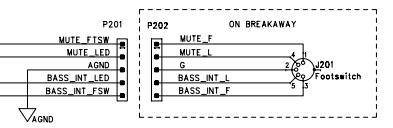


P204

MUTE
DIRECT_TUNER
LINE
HEADPHONE
EFF_SEND
EFF_RETURN_R
EFF_RETURN_T
AGND

+15V
-15V
MUTE_FTSW
MUTE_LED
BASS_INT_FSW
BASS_INT_LED
AGND

TP#	WP10	ALL OTHER WORKINGPRO MODELS
4	140mVAC	180mVAC
7	135mVAC	180mVAC
8	140mVAC	40mVAC
9	1.3VAC	375mVAC
10	1.3VAC	375mVAC



- AC AND DC VOLTAGES READ TO GROUND WITH A DVM UNDER THE FOLLOWING CONDITIONS (VOLTAGES MAY VARY +/-20%):
- PCB INSTALLED IN AMPLIFIER & CONNECTED TO PREAMP PCB AT P203-204
- ALL CONTROLS AT 50%. ALL SWITCHES "OUT" OR "OFF"
- (SEE PREAMP SERVICE DIAGRAM FOR SPECIFIC TEST CONDITIONS)
- APPLY 50mV 100Hz SINEWAVE AT INSTRUMENT INPUT
- TEST POINT MEASUREMENTS MAY VARY DEPENDING ON PRODUCT. SEE CHART FOR PRODUCT SPECIFIC TEST POINT MEASUREMENTS
 - THIS SCHEMATIC IS FOR PCB ASSY P/N 0064749000 AND PCB FAB P/N 0064749000
 - ALL DIODES ARE 1N4448
 - ALL UNPOLARIZED CAPACITORS IN uF, 10% OR BETTER, 50V MINIMUM
 - ALL RESISTORS ARE 1/4 WATT 5%
- NOTES: (UNLESS OTHERWISE NOTED)

THIS DOCUMENT CONTAINS INFORMATION OF A PROPRIETARY NATURE TO FENDER MUSICAL INSTRUMENTS AND IS SUBMITTED TO YOU IN CONFIDENCE AND SHALL NOT BE DISCLOSED OR TRANSMITTED TO OTHERS WITHOUT AUTHORIZATION FROM FENDER MUSICAL INSTRUMENTS.

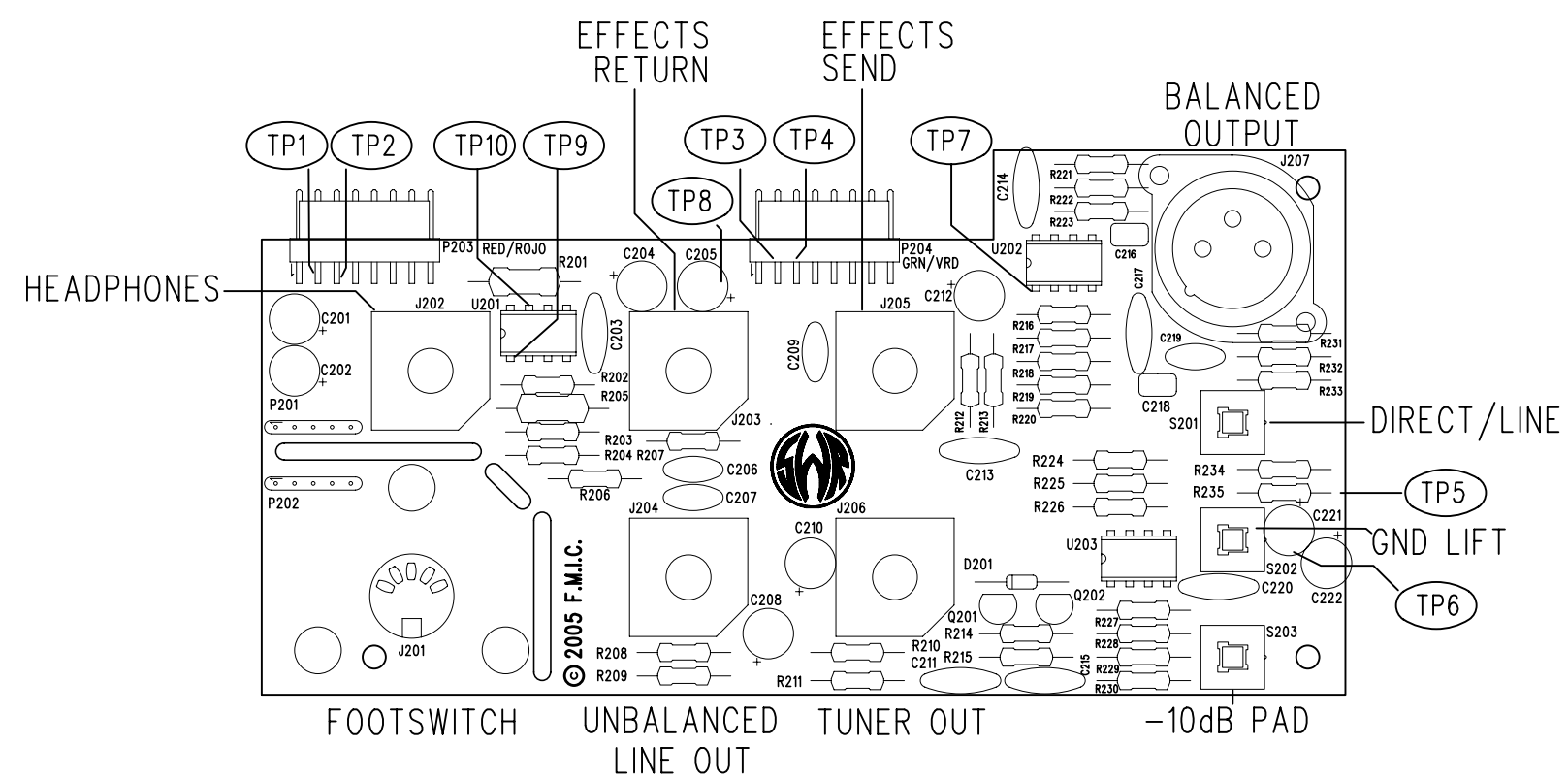
SWR
Corona, CA U.S.A.

CHECKED BY: _____
DATE: _____
APPROVED BY: _____
DATE: _____
DRAWN: G.McMillan ENGR: S.Banthead
DATABASE FILE: Z63252.SCH

TITLE: SERVICE DIAGRAM, (schematic)
WORKINGPRO AMPLIFIERS
AUDIO I/O PCB


SIZE: D DRAWING NUMBER: 0069470000 REV. A
RELEASE DATE: 15-SEP-05 SHEET: 1 OF 2

REVISIONS			
REV.	DESCRIPTION	DATE	APPROVED
A	PR673	15-SEP-05	S.M.B.



FILM/DWG: SERVICE DIAGRAM
 DATABASE: Z632P2.PCB DATE: 15-SEP-05

1. SEE SHEET 1 FOR TEST CONDITIONS & TEST POINT VALUES
 NOTES: (UNLESS OTHERWISE SPECIFIED)

THIS DOCUMENT CONTAINS INFORMATION OF A PROPRIETARY NATURE TO FENDER MUSICAL INSTRUMENTS AND IS SUBMITTED TO YOU IN CONFIDENCE AND SHALL NOT BE DISCLOSED OR TRANSMITTED TO OTHERS WITHOUT AUTHORIZATION FROM FENDER MUSICAL INSTRUMENTS.		 SWR Corona, CA U.S.A.	
CHECKED BY: _____ DATE: _____		TITLE: SERVICE DIAGRAM, COMBINED (PCB assy) WorkingPro AMPLIFIERS AUDIO I/O PCB	
APPROVED BY: _____ DATE: _____		SIZE B	DRAWING NUMBER 0069470000
DRAWN: G.McMillan ENGR: S.Bankhead	DATABASE FILE: Z632P2.PCB	RELEASE DATE: 15-SEP-05	REV. A SHEET 2 OF 2