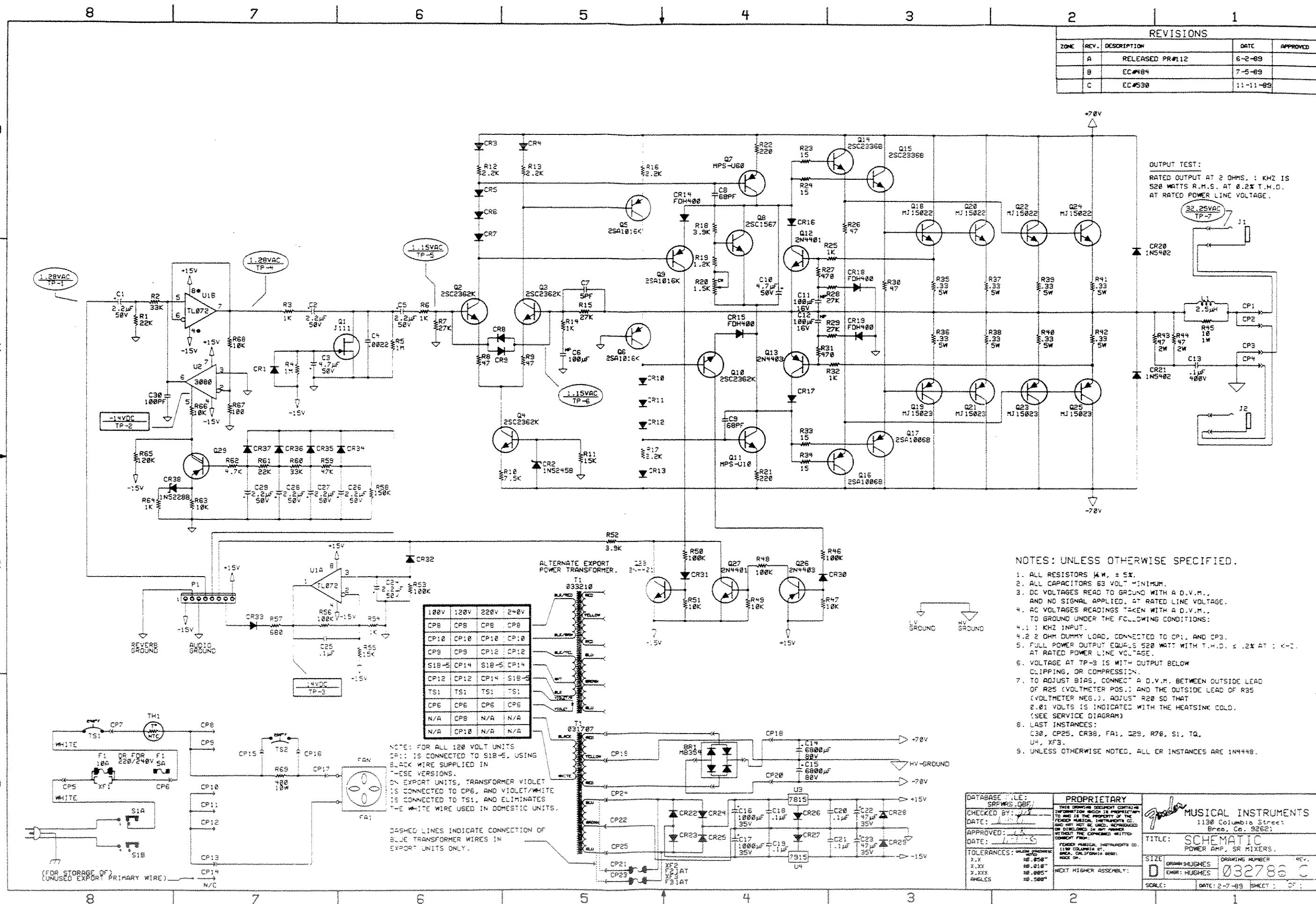


REVISIONS				
ZONE	REV.	DESCRIPTION	DATE	APPROVED
	A	RELEASED PR#112	6-2-89	Ed
	B	EC#488	6-25-89	Ed

A NOTES: UNLESS OTHERWISE SPECIFIED.

1. ALL RESISTORS 1/4W, ± 5%.
2. ALL CAPACITORS 63 VOLT MINIMUM.
3. ALL VOLTAGES READ TO GROUND WITH A D.V.M. UNDER THE FOLLOWING CONDITIONS: GRAPHIC EQUALIZER AND LOW FREQUENCY / HIGH FREQUENCY CONTROLS AT CENTER TRAVEL / ROTATION, MAIN AND MONITOR REVERB AT MINIMUM, AND ALL OTHER CONTROLS AT MAXIMUM.
4. LAST INSTANCE: C39, J8, LD2, P1, R68, SP6, U9. INSTANCE R52 AND R61 DELETED.
5. CIRCUITRY WITHIN DASHED LINES IS IDENTICAL FOR EACH CHANNEL.
6. INSTANCE NAMES IN EACH CHANNEL ARE KEYED TO THE CHANNEL NUMBERS.

REF. DES.	ITEM	QTY	PART NO.	DESCRIPTION
DATABASE FILE: PROPRIETARY				
CHECKED BY: J.L.L.				
DATE: 6-27-89				
APPROVED: [Signature]				
DATE: 6-27-89				
TOLERANCES: UNLESS OTHERWISE SPECIFIED				
K.X	± 0.5%			
K.XX	± 0.1%			
K.XXX	± 0.05%			
ANGLES	± 0.500°			
MUSICAL INSTRUMENTS 1198 Columbia Street Brea, Ca. 92621				
TITLE: SCHEMATIC, PREAMP, SR6528 AND SR6528.				
SIZE: D	DRAWN: HUGHES	DRAWING NUMBER: 031824	REV: B	
SCALE: DATE: 12-1-88 SHEET 1 OF 1				



REVISIONS				
ZONE	REV.	DESCRIPTION	DATE	APPROVED
A		RELEASED PR#112	6-2-89	
B		EC#484	7-5-89	
C		EC#530	11-11-89	

OUTPUT TEST:
 RATED OUTPUT AT 2 OHMS, 1 KHZ IS
 520 WATTS R.M.S. AT 0.2% T.H.D.
 AT RATED POWER LINE VOLTAGE.

NOTES: UNLESS OTHERWISE SPECIFIED.

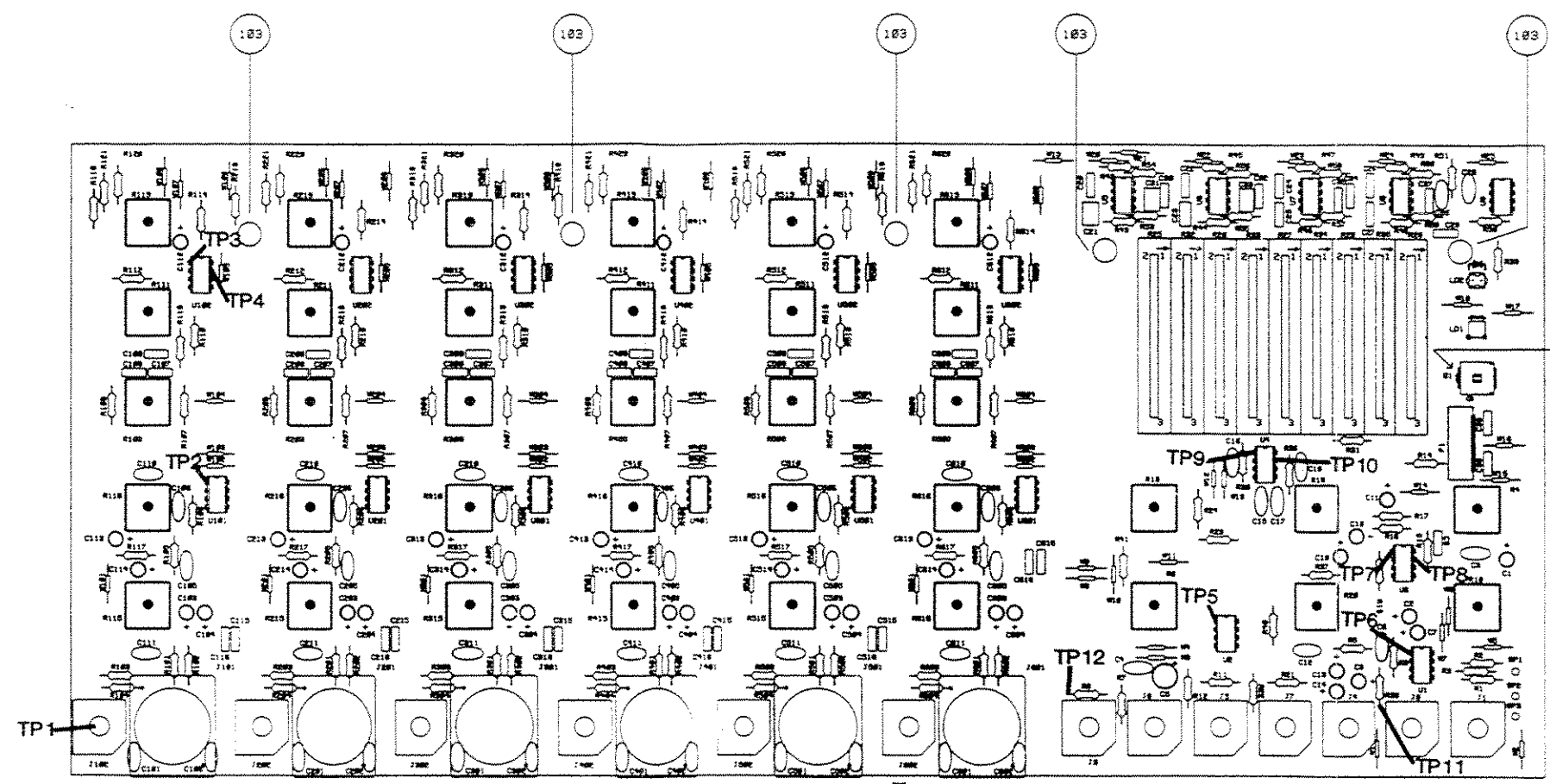
1. ALL RESISTORS 1/4W, ± 5%.
2. ALL CAPACITORS 63 VOLT MINIMUM.
3. DC VOLTAGES READ TO GROUND WITH A D.V.M., AND NO SIGNAL APPLIED, AT RATED LINE VOLTAGE.
4. AC VOLTAGES READINGS TAKEN WITH A D.V.M., TO GROUND UNDER THE FOLLOWING CONDITIONS:
 4.1 1 KHZ INPUT.
 4.2 2 OHM DUMMY LOAD, CONNECTED TO CP1, AND CP3.
5. FULL POWER OUTPUT EQUALS 520 WATT WITH T.H.D. ≤ .2% AT 1 KHZ AT RATED POWER LINE VOLTAGE.
6. VOLTAGE AT TP-3 IS WITH OUTPUT BELOW CLIPPING, OR COMPRESSION.
7. TO ADJUST BIAS, CONNECT A D.V.M. BETWEEN OUTSIDE LEAD OF R25 (VOLTMETER POS.) AND THE OUTSIDE LEAD OF R26 (VOLTMETER NEG.). ADJUST R28 SO THAT 2.01 VOLTS IS INDICATED WITH THE HEATSINK COLD. (SEE SERVICE DIAGRAM)
8. LAST INSTANCES:
 CR30, CP25, CR30, FA1, Q29, R76, S1, TQ, U4, XF3.
9. UNLESS OTHERWISE NOTED, ALL CR INSTANCES ARE 1N4448.

NOTE: FOR ALL 120 VOLT UNITS
 CP11 IS CONNECTED TO S18-5, USING
 BLACK WIRE SUPPLIED IN
 THESE VERSIONS.
 ON EXPORT UNITS, TRANSFORMER VIOLET
 IS CONNECTED TO CP6, AND VIOLET/WHITE
 IS CONNECTED TO TS1, AND ELIMINATES
 THE WHITE WIRE USED IN DOMESTIC UNITS.

DASHED LINES INDICATE CONNECTION OF
 BLUE TRANSFORMER WIRES IN
 EXPORT UNITS ONLY.

DATABASE FILE: SRFWS.DBF CHECKED BY: DATE: APPROVED: DATE:	PROPRIETARY THIS DRAWING OR DOCUMENT CONTAINS INFORMATION WHICH IS PROPRIETARY TO AND IS THE PROPERTY OF THE FENDER MUSICAL INSTRUMENTS CO. AND MAY NOT BE USED, REPRODUCED OR DISCLOSED IN ANY MANNER WITHOUT THE EXPRESS WRITTEN CONSENT FROM: FENDER MUSICAL INSTRUMENTS CO. 1130 COLUMBIA ST. BREA, CALIFORNIA 92621 MADE IN U.S.A.	MUSICAL INSTRUMENTS 1130 Columbia Street Brea, Ca. 92621 TITLE: SCHEMATIC POWER AMP, SR MIXERS. SIZE: DRAWING NUMBER: 032786 C ENGR: HUGHES SCALE: DATE: 2-7-89 SHEET: 1 OF 1
---	--	--

REVISIONS				
ZONE	REV.	DESCRIPTION	DATE	APPROVED
	A	RELEASED PR#112	5-31-89	
	B	EC# 472	5-9-89	
	C	EC# L01872	12-11-89	
	D	EC# L01914	1-6-93	



FILM/DWG: ASSEMBLY
 DATABASE: SR6PP.DBF DATE: JAN 30 1989
 LAYERS PLOTTED: 1 2 3 4 10
 15 19

- FOR TEST POINT DATA SEE SCHEMATIC
- SR8520 PCB LAYOUT IS IDENTICAL TO SR6520, EXCEPT TWO ADDITIONAL INPUT CHANNELS HAVE BEEN ADDED BETWEEN CHANNELS 5 AND 6. INSTANCE NAMES STARTING AT 700 AND 800 ARE USED FOR CHANNELS 7 AND 8.

- 101. 025796, HEATSINK
- 102. 99004200200, NUT #6-32
- 103. 014171, SCREW M #4-40

REF.	DES.	ITEM	QTY	PART NO.	DESCRIPTION
DATABASE FILE: SR6PP.DBF CHECKED BY: [Signature] DATE: [Blank] APPROVED: [Signature] DATE: [Blank]					
TOLERANCES: DIMENSIONS: .005" .010" .015" .020" ANGLES: .500"					
TITLE: SERVICE DIAGRAM SR SERIES PREAMP SIZE: B DRAWN: HUGHES ENGR: HUGHES 033323 DATE: 1-6-89 SHEET 1					

D
C
B
A

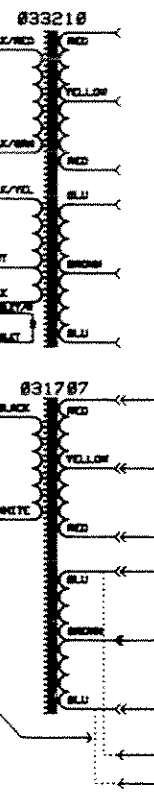
D
C
B
A

8 7 6 5 4 3 2 1

REVISIONS				
ZONE	REV.	DESCRIPTION	DATE	APPROVED
	A	RELEASED PR#112	5-25-89	

100V	120V	220V	240V
CP8	CP8	CP8	CP8
CP10	CP10	CP10	CP10
CP9	CP9	CP11	CP11
S18-5	CP13	S18-5	CP13
CP11	CP11	CP13	S18-5
TS1	TS1	TS1	TS1
CP6	CP6	CP6	CP6
N/A	CP8	N/A	N/A
N/A	CP10	N/A	N/A

ALTERNATE EXPORT POWER TRANSFORMER.



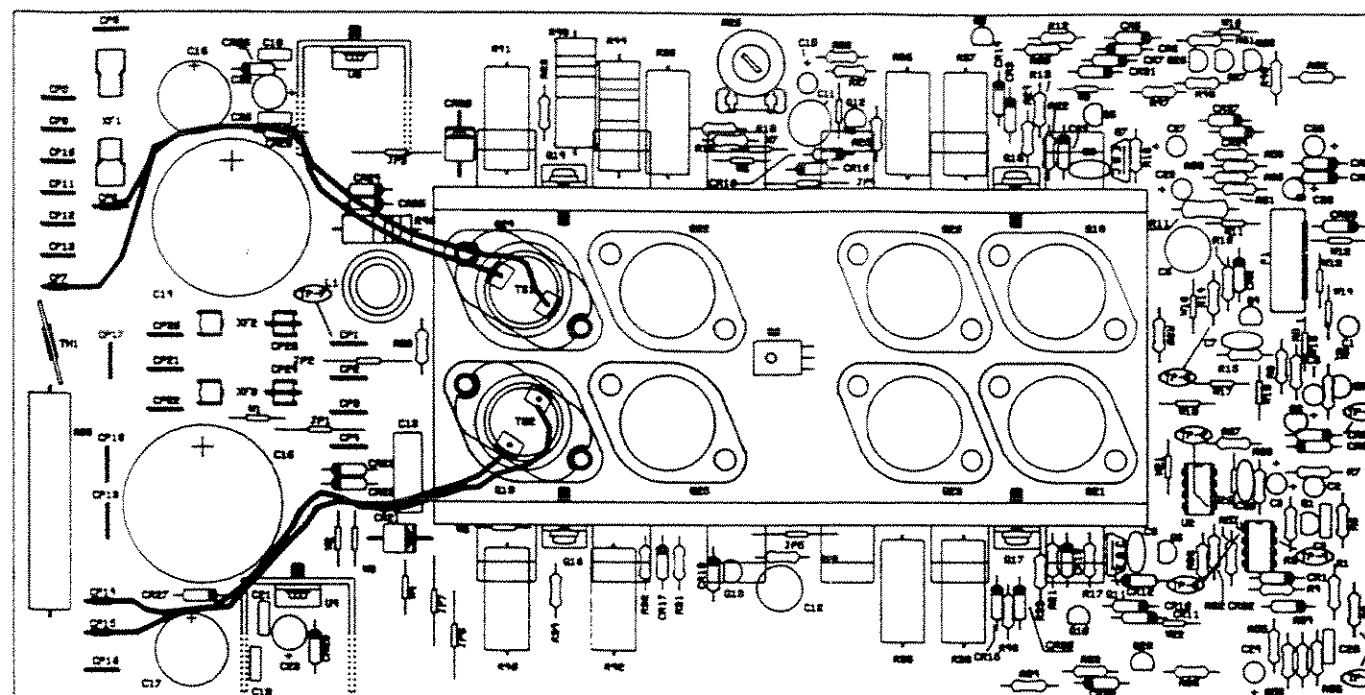
ASSEMBLY NOTES:

- ASSUME ALL "CP" AND "XF" INSTANCES ARE INSTALLED WITH THE FOLLOWING EXCEPTIONS:
 - ON EXPORT UNITS, DELETE CP23 AND CP24.
 - ON DOMESTIC UNITS, DELETE CP9, CP10, CP13, CP20, CP22, XF2, AND XF3.
- WIRE SETS:

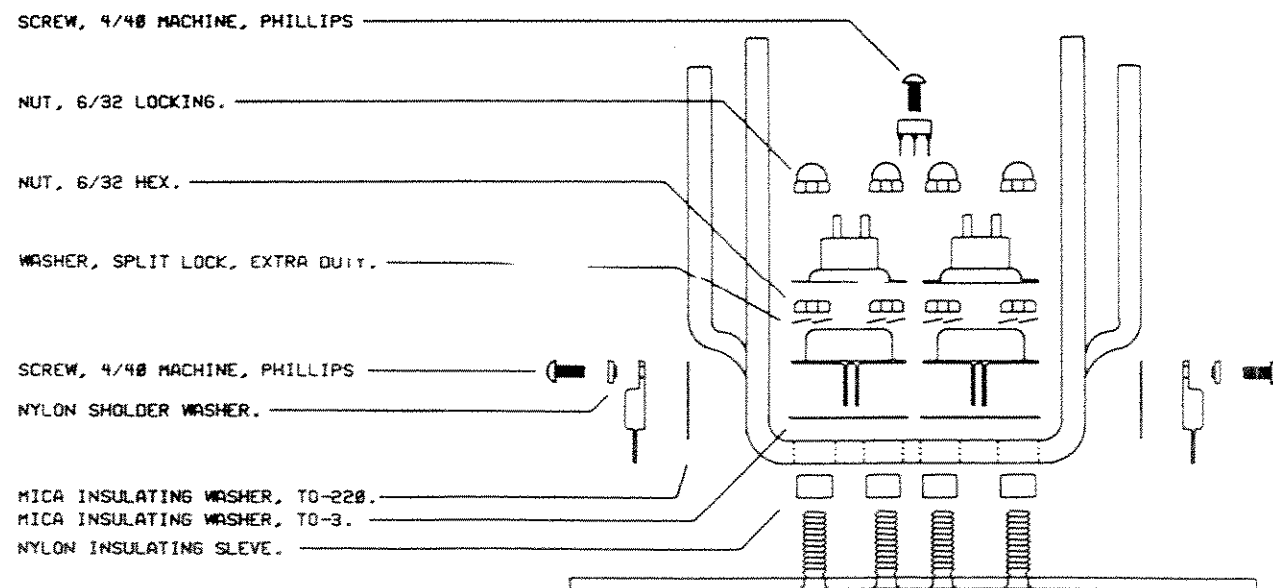
ON EXPORT UNITS, WIRES FROM TS-1 ARE REPLACED BY A SINGLE A SINGLE WIRE BETWEEN ONE TERMINAL OF TS1 AND CP7. CONNECTION OF THE REMAINING TERMINAL OF TS1 AND CP6 IS ACCOMPLISHED WITH THE VIOLET AND VIOLET/WHITE LEADS INCLUDED ON EXPORT TRANSFORMER #33210.

NOTE: FOR ALL 120 VOLT UNITS CP11 IS CONNECTED TO S18-5, USING BLACK WIRE SUPPLIED IN THESE VERSIONS. ON EXPORT UNITS, TRANSFORMER VIOLET IS CONNECTED TO CP6, AND VIOLET/WHITE IS CONNECTED TO TS1, AND ELIMINATES THE WHITE WIRE USED IN DOMESTIC UNITS.

DASHED LINES INDICATE CONNECTION OF BLUE TRANSFORMER WIRES IN EXPORT UNITS ONLY.



HEATSINK ASSEMBLY.



- SCREW, 4/48 MACHINE, PHILLIPS
- NUT, 6/32 LOCKING.
- NUT, 6/32 HEX.
- WASHER, SPLIT LOCK, EXTRA DUTY.
- SCREW, 4/48 MACHINE, PHILLIPS
- NYLON SHOULDER WASHER.
- MICA INSULATING WASHER, TO-220.
- MICA INSULATING WASHER, TO-3.
- NYLON INSULATING SLEEVE.

REF. DES.	ITEM QTY	PART NO.	DESCRIPTION
DATABASE FILE:		PROPRIETARY	
CHECKED BY:		THIS DRAWING DOCUMENT CONTAINS INFORMATION WHICH IS PROPRIETARY TO AND IS THE PROPERTY OF THE FENDER MUSICAL INSTRUMENTS CO. AND MAY NOT BE USED, REPRODUCED OR DISCLOSED IN ANY MANNER WITHOUT THE EXPRESS WRITTEN CONSENT FROM:	
DATE:	6-21-89	FENDER MUSICAL INSTRUMENTS CO. 1130 COLUMBIA ST. BREA, CALIFORNIA 92621	
APPROVED:		TITLE: SERVICE DIAGRAM	
DATE:	6-27-89	520 WATT SR POWER AMPLIFIERS.	
TOLERANCES: UNLESS OTHERWISE NOTED		SIZE	DRAWING NUMBER
X.XX	±0.050"	B	033325
X.XXX	±0.010"		
X.XXX	±0.005"		
ANGLES	±0.500°		
		NEXT HIGHER ASSEMBLY:	REV.
		SUNN SR6520	A
		SCALE:	DATE: 6-1-89 SHEET 1 OF 1