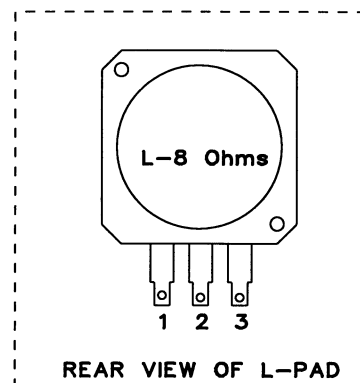
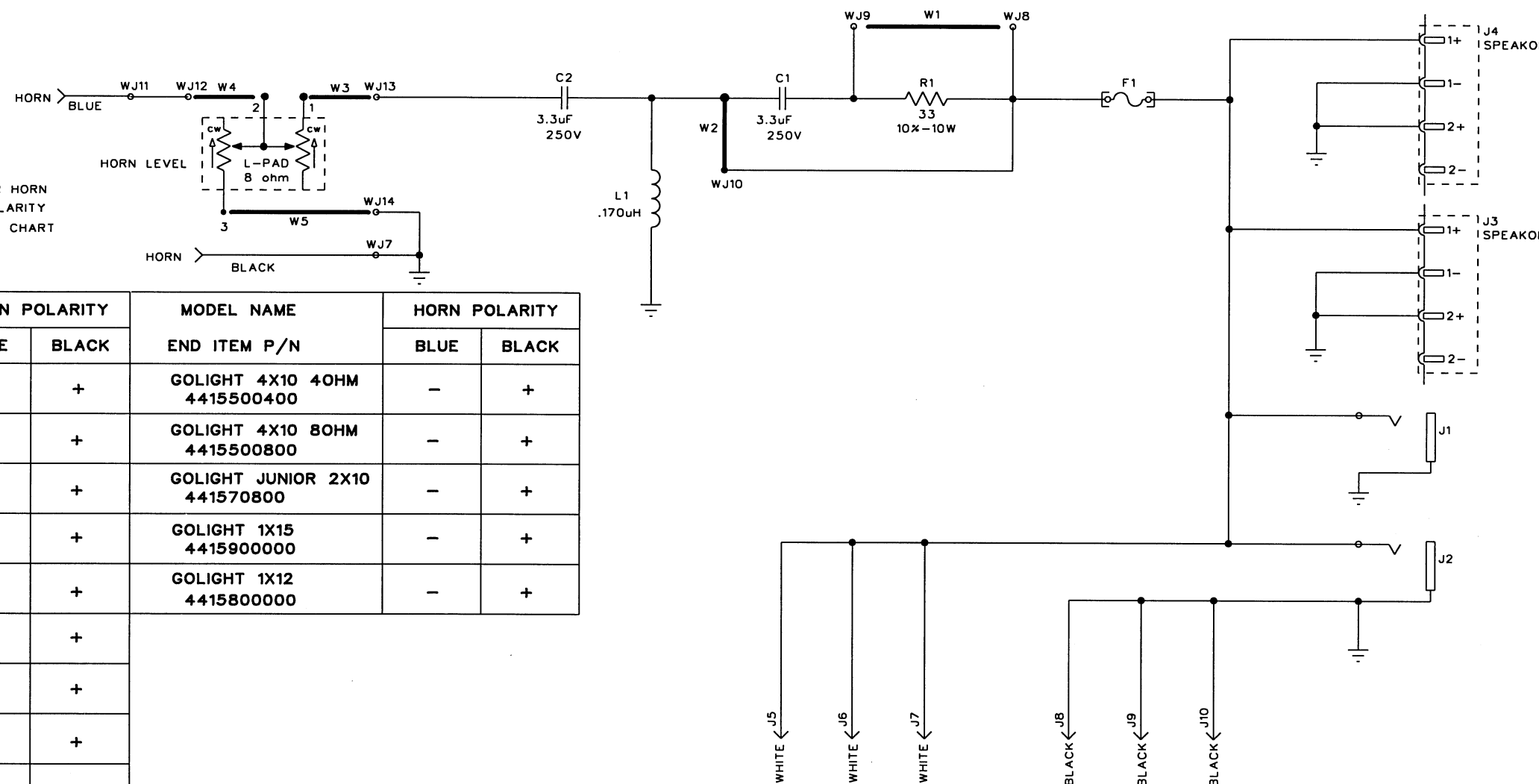


REVISIONS

REV.	DESCRIPTION	DATE	APPROVED
A	PR646	06-JUN-04	I.D.K.
B	PR771	14-JUN-07	J.H.
C	EC 3967	30-NOV-07	J.H.
D	PR1047	07-JUL-10	J.H.



FOR HORN POLARITY SEE CHART



MODEL NAME END ITEM P/N	HORN POLARITY		MODEL NAME END ITEM P/N	HORN POLARITY	
	BLUE	BLACK		BLUE	BLACK
MEGOLIATH 441010000	-	+	GOLIGHT 4X10 4OHM 4415500400	-	+
GOLIATH SENIOR 4410300010	-	+	GOLIGHT 4X10 8OHM 4415500800	-	+
GOLIATH 8 OHM 4410500810	-	+	GOLIGHT JUNIOR 2X10 441570800	-	+
GOLIATH 4 OHM 4410500410	-	+	GOLIGHT 1X15 4415900000	-	+
GOLIATH JUNIOR 8 OHM 4410700810	-	+	GOLIGHT 1X12 4415800000	-	+
GOLIATH JUNIOR 4 OHM 4410700410	-	+			
SON OF BERTHA 4410900000	-	+			
TRIAD 4470400000	-	+			
HENRY 8X8 4470200000	-	+			
WORKING PRO 1X15 4456600010	+	-			
WORKING PRO 2X10 4456400010	+	-			
WORKING PRO 4X10 8OHM 4456200010	+	-			
WORKING PRO 4X10 4OHM 4456200410	+	-			

- INSTALL JUMPER W2 FOR ASSEMBLY: 0075763000.
- C1, L1 AND W1 ARE NOT INSTALLED FOR ASSEMBLY: 0075763000.
- R1 IS NOT INSTALLED; RESERVED FOR FUTURE USE.
- THIS SCHEMATIC IS FOR PCB ASSEMBLIES: 0075762000 AND 0075763000.

NOTES: (UNLESS OTHERWISE NOTED)

THIS DOCUMENT CONTAINS INFORMATION OF A PROPRIETARY NATURE TO FENDER MUSICAL INSTRUMENTS AND IS SUBMITTED TO YOU IN CONFIDENCE AND SHALL NOT BE DISCLOSED OR TRANSMITTED TO OTHERS WITHOUT AUTHORIZATION FROM FENDER MUSICAL INSTRUMENTS.



MUSICAL INSTRUMENTS
Corona, CA U.S.A.

CHECKED BY: *[Signature]*
DATE: 7/7/10

APPROVED BY: J. HUBBARD
DATE: 7 JUL 2010

DRAWN: I.KOTHRADEN ENGR: I.KOTHRADEN

DATABASE FILE: Z771S.SCH

TITLE: SERVICE DIAGRAM, COMBINED (schematic)
SWR SPEAKER CABINETS

SIZE	DRAWING NUMBER	REV.
B	0068378000	D

RELEASE DATE: 06-JUN-04 SHEET 1 OF 2

8

7

6

5

4

3

2

1

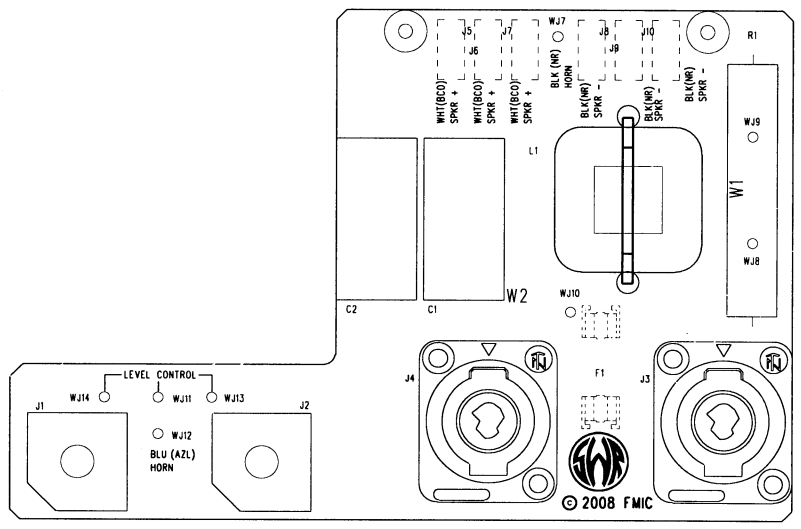
REVISIONS			
REV.	DESCRIPTION	DATE	APPROVED
A	PR646	06-JUN-04	I.D.K.
B	PR771	01-OCT-07	J.H.
C	EC3967	30-NOV-07	J.H.
D	PR1047	07-JUL-10	J.H.

D

C

B

A



FILM/DWG: SERVICE DIAGRAM
 DATABASE: Z771P.PCB DATE: 28-APR-08

1. SEE SHEET 1 FOR PRIMARY WIRING, TEST CONDITIONS AND TP VALUES.
 NOTES: (UNLESS OTHERWISE NOTED)

THIS DOCUMENT CONTAINS INFORMATION OF A PROPRIETARY NATURE TO FENDER MUSICAL INSTRUMENTS AND IS SUBMITTED TO YOU IN CONFIDENCE AND SHALL NOT BE DISCLOSED OR TRANSMITTED TO OTHERS WITHOUT AUTHORIZATION FROM FENDER MUSICAL INSTRUMENTS.		MUSICAL INSTRUMENTS Corona, CA U.S.A.	
CHECKED BY: <i>J.H.</i>	DATE: <i>7/1/2010</i>	TITLE: SERVICE DIAGRAM, COMBINED (PCB assy)	
APPROVED BY: J. HUBBARD	DATE: 7 JUL 2010	SWR SPEAKER CABINETS	
DRAWN: PKCORBIN	J. HUBBARD	SIZE: C	DRAWING NUMBER: 0068378000
DATABASE FILE: Z771P.PCB	RELEASE DATE: 01-OCT-07	SHEET: 2	OF: 2

8

7

6

5

4

3

2

1