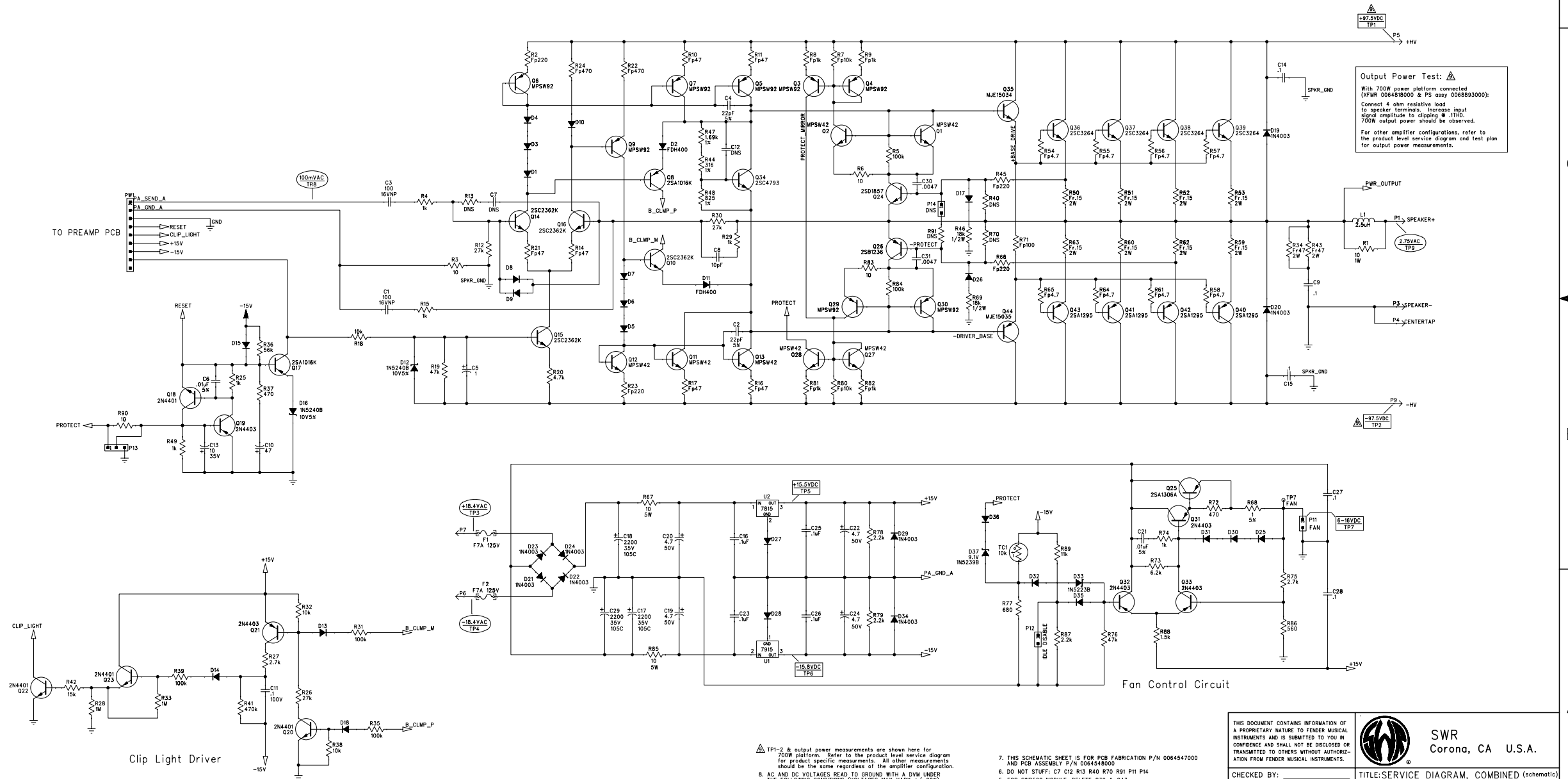
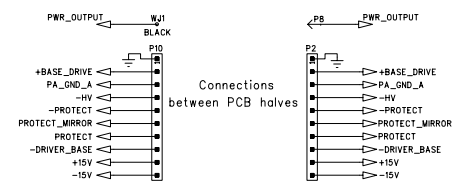
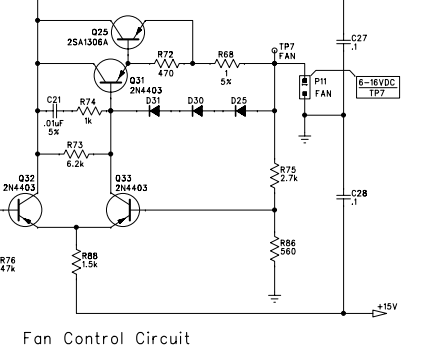
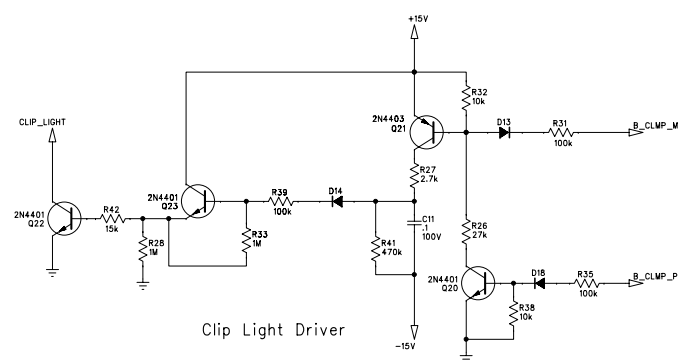


REVISIONS			
REV.	DESCRIPTION	DATE	APPROVED
A	PR632	30-JUL-04	B H
B	EC3147	30-SEP-04	S.M.B.
C	EC3174	07-JAN-05	S.M.B.
D	EC3213	14-APR-05	S.M.B.



Output Power Test:

With 700W power platform connected (XFRM 006483000 & PS Assy 0068893000):
 Connect 4 ohm resistive load to speaker terminals. Increase input signal amplitude to clipping @ 1THD.
 700W output power should be observed.
 For other amplifier configurations, refer to the product level service diagram and test plan for output power measurements.



- TP1-2 & output power measurements are shown here for 700W platform. Refer to the product level service diagram for product specific measurements. All other measurements should be the same regardless of the amplifier configuration.
- AC AND DC VOLTAGES READ TO GROUND WITH A DVM UNDER THE FOLLOWING CONDITIONS (VOLTAGES MAY VARY +/-20%):
 - POWER SUPPLY CONNECTED AS APPROPRIATE FOR THE INTENDED PRODUCT USAGE. (SEE NOTE #9)
 - DC SUPPLY TO BE OPERATING AT RATED LINE VOLTAGE
 - TEST POINTS TP1-4 MEASURED WITH NO INPUT SIGNAL
 - TEST POINT 7 VARIES WITHIN THE SPECIFIED RANGE DEPENDING ON THE TEMPERATURE OF THE HEATSINK
 - TEST POINTS TP8-9 MEASURED WITH:
 100mV RMS SINEWAVE AT 975 PPM 1 SIGNAL GND AT PW 2
 4 OHM RESISTIVE LOAD BETWEEN P1-P3
 - THIS SCHEMATIC SHEET IS FOR PCB FABRICATION P/N 0064547000 AND PCB ASSEMBLY P/N 0064548000
 - DO NOT STUFF: C7 C12 R13 R40 R70 R91 P11 P14
 - FOR SWR500 MODULE, DELETE Q39 & Q43
 - ALL DIODES IN4448.
 - ALL POLARIZED CAPACITORS IN uF, 20%; 50V MINIMUM.
 - ALL UNPOLARIZED CAPACITORS IN uF, 10% OR BETTER; 50V MINIMUM. (POWER SUPPLY BYPASS CAPACITORS ARE 20%).
 - ALL RESISTORS IN OHMS, 5%; 1/4W.
- NOTES: (UNLESS OTHERWISE NOTED)

THIS DOCUMENT CONTAINS INFORMATION OF A PROPRIETARY NATURE TO FENDER MUSICAL INSTRUMENTS AND IS SUBMITTED TO YOU IN CONFIDENCE AND SHALL NOT BE DISCLOSED OR TRANSMITTED TO OTHERS WITHOUT AUTHORIZATION FROM FENDER MUSICAL INSTRUMENTS.

SWR
Corona, CA U.S.A.

CHECKED BY: _____
 DATE: _____

APPROVED BY: _____
 DATE: _____

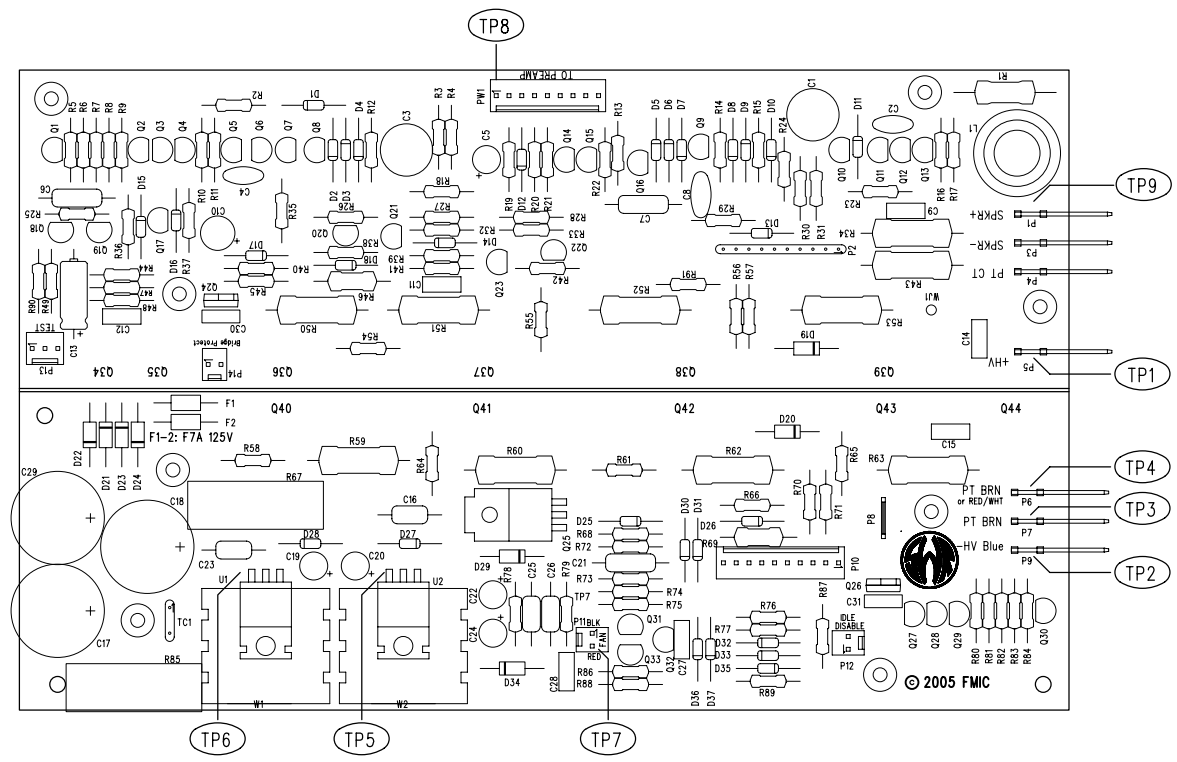
TITLE: SERVICE DIAGRAM, COMBINED (schematic)
 SWR 500/1000
 POWER AMP

SIZE: DRAWING NUMBER: 0064549000 REV. D
 DRAWN: W. HUGHES ENGR: W. HUGHES
 DATABASE FILE: w632s.SCH
 RELEASE DATE: 29-JUL-04 SHEET: 1 OF 2

8 7 6 5 4 3 2 1


REVISIONS			
REV.	DESCRIPTION	DATE	APPROVED
A	PR632	30-JUL-04	S.M.B.
B	EC3147	30-SEP-04	S.M.B.
C	EC3174	07-JAN-05	S.M.B.
D	EC3213	14-APR-05	S.M.B.

D
C
B
A



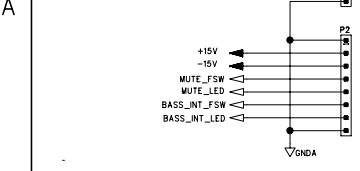
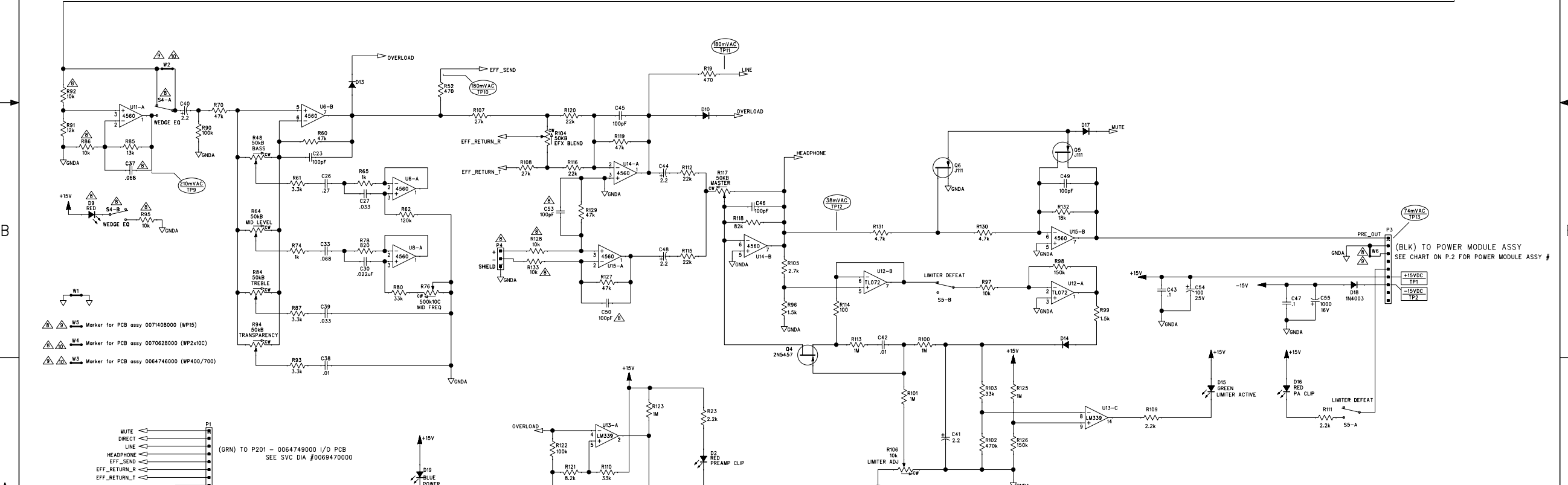
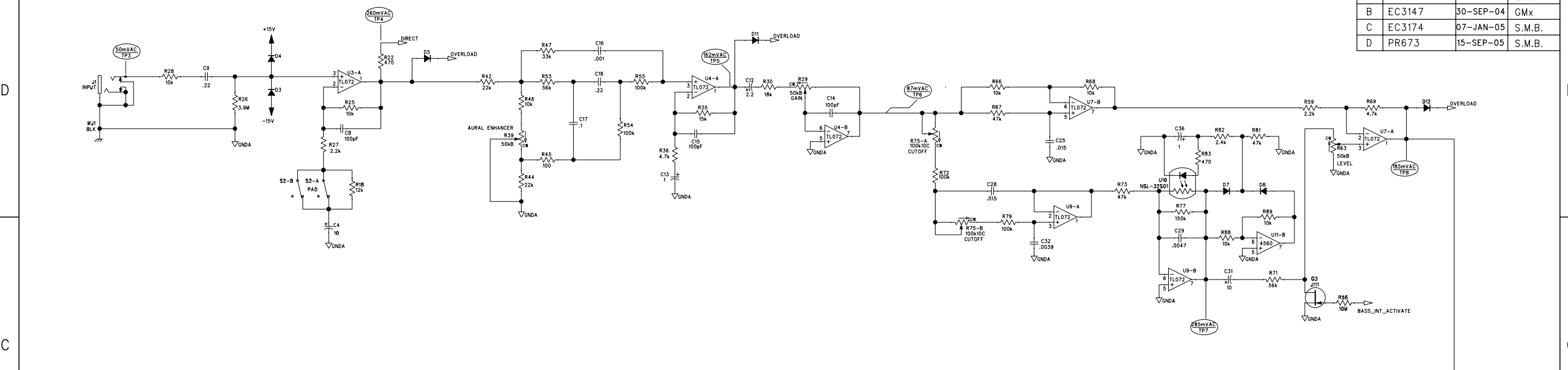
FILM/DWG: SERVICE DIAGRAM
 DATABASE: z632p5.PCB DATE: 14-APR-05

1. SEE SHEET 1 FOR TEST CONDITIONS & TEST POINT VALUES
 NOTES: (UNLESS OTHERWISE NOTED)

THIS DOCUMENT CONTAINS INFORMATION OF A PROPRIETARY NATURE TO FENDER MUSICAL INSTRUMENTS AND IS SUBMITTED TO YOU IN CONFIDENCE AND SHALL NOT BE DISCLOSED OR TRANSMITTED TO OTHERS WITHOUT AUTHORIZATION FROM FENDER MUSICAL INSTRUMENTS.		 SWR Corona, CA U.S.A.	
CHECKED BY: _____ DATE: _____		TITLE: SERVICE DIAGRAM, COMBINED (PCB assy) SWR 500/1000 POWER AMP	
APPROVED BY: _____ DATE: _____		SIZE C	DRAWING NUMBER 0064549000
DRAWN: R.MURRAY ENGR: B.HUGHES DATABASE FILE: z632p5.PCB		RELEASE DATE: 30-JUL-04	REV. D SHEET 2 OF 2

8 7 6 5 4 3 2 1

REVISIONS			
REV.	DESCRIPTION	DATE	APPROVED
A	PR632	30-JUL-04	GMx
B	EC3147	30-SEP-04	GMx
C	EC3174	07-JAN-05	S.M.B.
D	PR673	15-SEP-05	S.M.B.



(GRN) TO P201 - 0064749000 I/O PCB
SEE SVC DIA #0069470000

(RED) TO P202 - 0064749000 I/O PCB
SEE SVC DIA #0069470000

- 1. ALL RESISTORS IN OHMS, 5% 1/4W.
- 2. ALL UNPOLARIZED CAPACITORS IN uF, 10% OR BETTER, 50V MINIMUM. (POWER SUPPLY BYPASS CAPACITORS ARE 20%).
- 3. ALL POLARIZED CAPACITORS IN uF, 20%; 50V MINIMUM.
- 4. ALL DIODES ARE 1N4448.
- 5. THIS SCHEMATIC IS FOR PCB ASSEMBLIES P/N 0064746000, 0070628000, AND 0071408000.
- 6. THIS SCHEMATIC IS FOR PCB P/N 0064745000 REV. C. FOR PCB FAB REV A-B REFER TO REV C OF THIS SERVICE DIAGRAM.
- 7. AC AND DC VOLTAGES READ TO GROUND WITH A DVM UNDER THE FOLLOWING CONDITIONS: VOLTAGES MAY VARY +/- 20%:
 - UNIT OPERATING AT RATED LINE VOLTAGE
 - ALL CONTROLS AT 50%, ALL SWITCHES "ON" OR "OFF"
 - 50mv, 100ms SNEAKWAY AT INSTRUMENT INPUT

THIS DOCUMENT CONTAINS INFORMATION OF A PROPRIETARY NATURE TO FENDER MUSICAL INSTRUMENTS AND IS SUBMITTED TO YOU IN CONFIDENCE AND SHALL NOT BE DISCLOSED OR TRANSMITTED TO OTHERS WITHOUT AUTHORIZATION FROM FENDER MUSICAL INSTRUMENTS.

SWR
Corona, CA U.S.A.

TITLE: SERVICE DIAGRAM, (schematic)
WORKINGPRO AMPLIFIERS
PREAMP

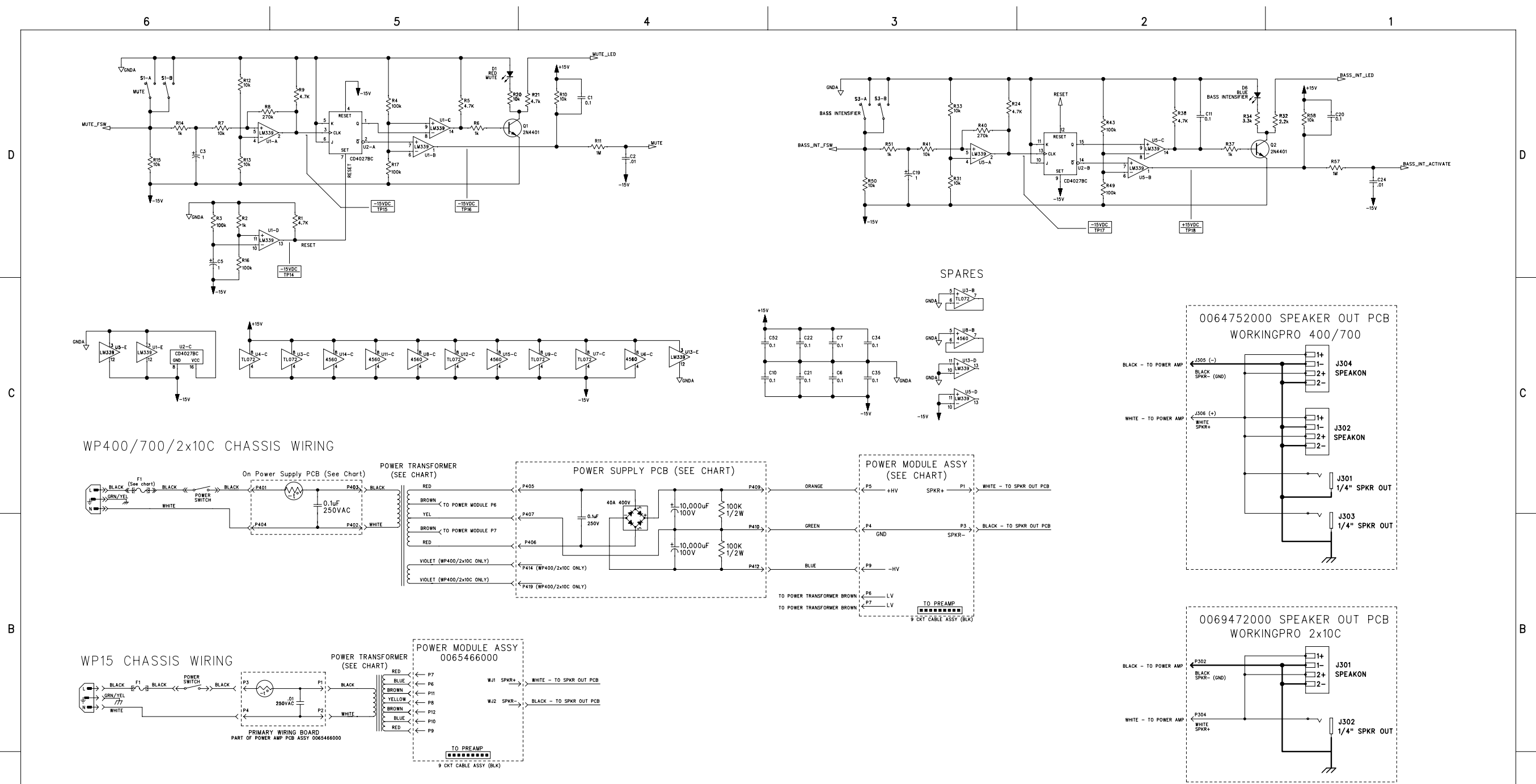
CHECKED BY: _____
DATE: _____

APPROVED BY: _____
DATE: _____

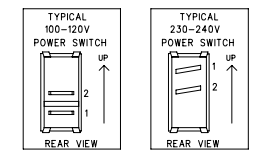
DRAWN: G.McMillan ENGR: S.Bankhead
DATABASE FILE: Z632S1.SCH

SIZE: DRAWING NUMBER
D 0064747000

RELEASE DATE: 15-SEP-05 SHEET: 1 OF 3



MODEL	VOLTAGE	TRANSFORMER	F1 FUSE RATING	POWER MODULE	POWER SUPPLY PCB
WORKINGPRO 700	100V	0064819000	T15A H 250V 3AG	0064754000	0068893000
	120V	0064818000	T15A H 250V 3AG		
	230V	0064817000	T8A L 250V 5mm		
WORKINGPRO 400 WORKINGPRO 2x10C	100V	0064823000	T8A H 250V 3AG	0064714000	0064753000
	120V	0064821000	T8A H 250V 3AG		
WORKINGPRO 15	100V	0064779000	F8A L 250V 3AG	0065466000	N/A
	120V	0064778000	F6A L 250V 3AG		
	230V	0064780000	F3.15A L 250V 5mm		



1. SEE SHEET 1 FOR TEST CONDITIONS
NOTES: (UNLESS OTHERWISE NOTED)

THIS DOCUMENT CONTAINS INFORMATION OF A PROPRIETARY NATURE TO FENDER MUSICAL INSTRUMENTS AND IS SUBMITTED TO YOU IN CONFIDENCE AND SHALL NOT BE DISCLOSED OR TRANSMITTED TO OTHERS WITHOUT AUTHORIZATION FROM FENDER MUSICAL INSTRUMENTS.

SWR
Corona, CA U.S.A.

CHECKED BY: _____
DATE: _____
APPROVED BY: _____
DATE: _____
DRAWN: G.McMillan [ENGR: S.Bankhead]
DATABASE FILE: Z632SID.SCH

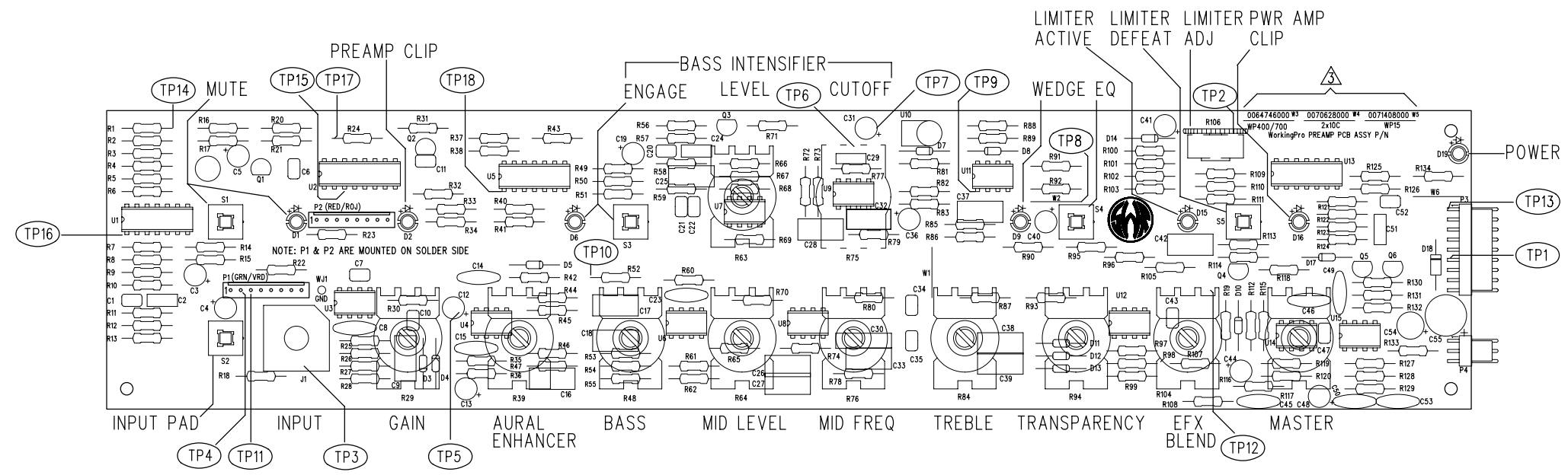
TITLE: SERVICE DIAGRAM, COMBINED (schematic)
WORKINGPRO AMPLIFIERS
PREAMP & CHASSIS WIRING

SIZE: **D** DRAWING NUMBER: **0064747000** REV. **D**

RELEASE DATE: 15-SEP-05 SHEET: 2 OF 3


8 7 6 5 4 3 2 1

REVISIONS			
REV.	DESCRIPTION	DATE	APPROVED
A	PR632	30-JUL-04	GMx
B	EC3147	30-SEP-04	GMx
C	EC3174	07-JAN-05	S.M.B.
D	PR673	15-SEP-05	S.M.B.



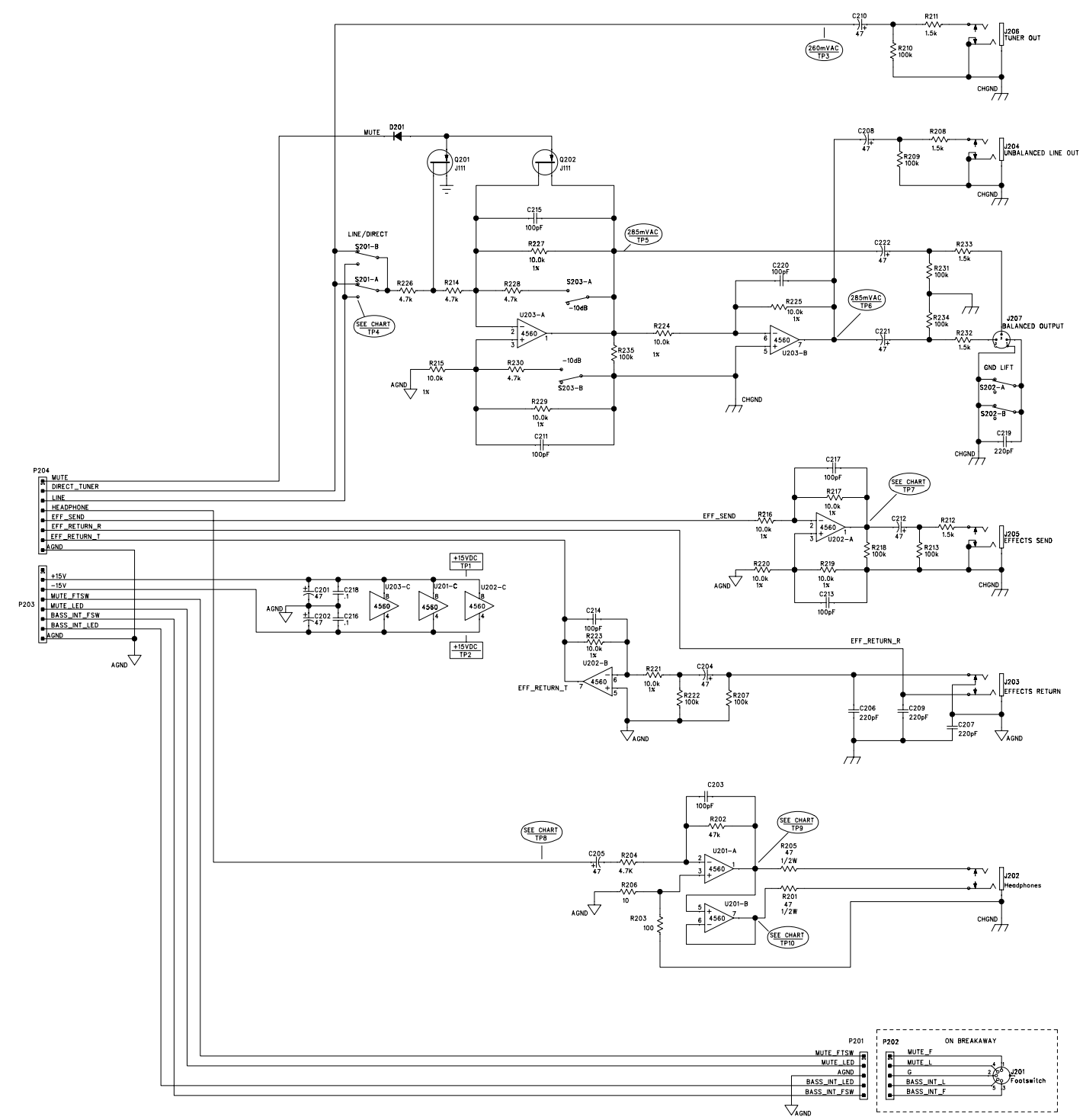
FILM/DWG: SERVICE DIAGRAM
 DATABASE: Z632P1.PCB DATE: 15-SEP-05

UNLESS OTHERWISE NOTED:
 1. SEE SHEET 1 FOR TEST CONDITIONS & TEST POINT VALUES
 2. TEST POINT LOCATIONS ARE INDICATED ON PCB REAR SILK SCREEN
 3. PRESENCE OF WIRE JUMPER (W3, W4, OR W5) DENOTES SPECIFIC WORKINGPRO PCB ASSEMBLY

THIS DOCUMENT CONTAINS INFORMATION OF A PROPRIETARY NATURE TO FENDER MUSICAL INSTRUMENTS AND IS SUBMITTED TO YOU IN CONFIDENCE AND SHALL NOT BE DISCLOSED OR TRANSMITTED TO OTHERS WITHOUT AUTHORIZATION FROM FENDER MUSICAL INSTRUMENTS.		 SWR Corona, CA U.S.A.	
CHECKED BY: _____ DATE: _____		TITLE: SERVICE DIAGRAM, COMBINED (PCB assy) WORKINGPRO AMPLIFIERS PREAMP	
APPROVED BY: _____ DATE: _____		SIZE C	DRAWING NUMBER 0064747000
DRAWN: G McMillan	ENGR: S Bankhead	RELEASE DATE: 15-SEP-05	REV. D SHEET 3 OF 3
DATABASE FILE: Z632P1.PCB			

8 7 6 5 4 3 2 1

REVISIONS			
REV.	DESCRIPTION	DATE	APPROVED
A	PR673	15 SEP 05	S.M.B.



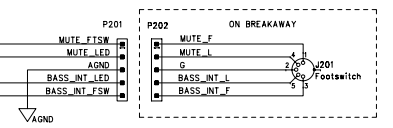
P204

MUTE
DIRECT_TUNER
LINE
HEADPHONE
EFF_SEND
EFF_RETURN_R
EFF_RETURN_T
AGND

P203

+15V
-15V
MUTE_FTSW
MUTE_LED
BASS_INT_FSW
BASS_INT_LED
AGND

TP#	WP10	ALL OTHER WORKINGPRO MODELS
4	140mVAC	180mVAC
7	135mVAC	180mVAC
8	140mVAC	40mVAC
9	1.3VAC	375mVAC
10	1.3VAC	375mVAC



- AC AND DC VOLTAGES READ TO GROUND WITH A DVM UNDER THE FOLLOWING CONDITIONS (VOLTAGES MAY VARY +/-20%):
- PCB INSTALLED IN AMPLIFIER & CONNECTED TO PREAMP PCB AT P203-204
- ALL CONTROLS AT 50%. ALL SWITCHES "OUT" OR "OFF"
- (SEE PREAMP SERVICE DIAGRAM FOR SPECIFIC TEST CONDITIONS)
- APPLY 50mV 100Hz SINEWAVE AT INSTRUMENT INPUT
- TEST POINT MEASUREMENTS MAY VARY DEPENDING ON PRODUCT. SEE CHART FOR PRODUCT SPECIFIC TEST POINT MEASUREMENTS
 - THIS SCHEMATIC IS FOR PCB ASSY P/N 0064749000 AND PCB FAB P/N 0064749000
 - ALL DIODES ARE 1N4448
 - ALL UNPOLARIZED CAPACITORS IN uF, 10% OR BETTER, 50V MINIMUM
 - ALL RESISTORS ARE 1/4 WATT 5%
- NOTES: (UNLESS OTHERWISE NOTED)

THIS DOCUMENT CONTAINS INFORMATION OF A PROPRIETARY NATURE TO FENDER MUSICAL INSTRUMENTS AND IS SUBMITTED TO YOU IN CONFIDENCE AND SHALL NOT BE DISCLOSED OR TRANSMITTED TO OTHERS WITHOUT AUTHORIZATION FROM FENDER MUSICAL INSTRUMENTS.

SWR
Corona, CA U.S.A.

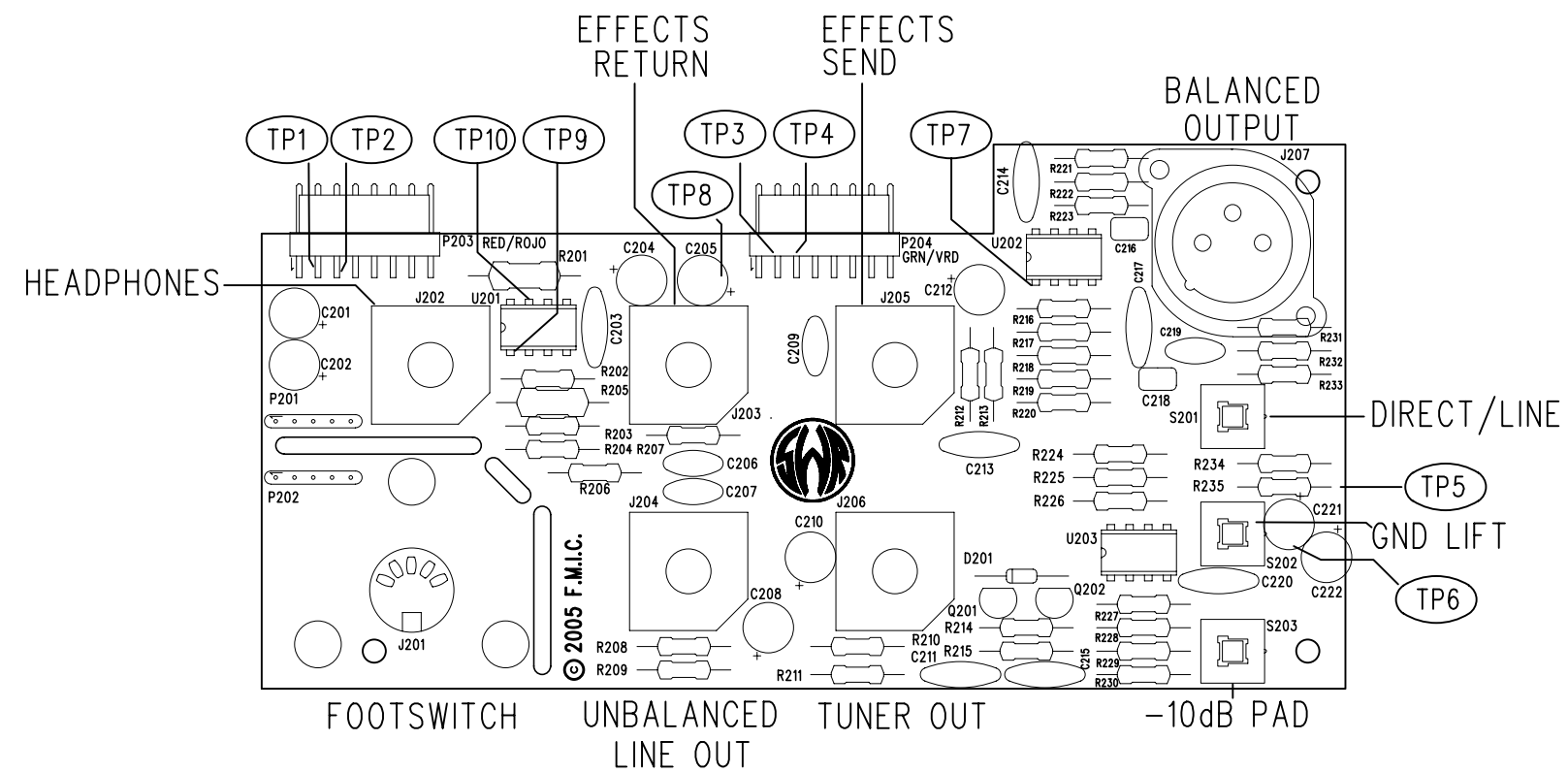
CHECKED BY: _____
DATE: _____
APPROVED BY: _____
DATE: _____
DRAWN: G.McMillan ENGR: S.Banthead
DATABASE FILE: Z63252.SCH

TITLE: SERVICE DIAGRAM, (schematic)
WORKINGPRO AMPLIFIERS
AUDIO I/O PCB

SIZE: D
DRAWING NUMBER: 0069470000
REV. A


RELEASE DATE: 15-SEP-05 SHEET: 1 OF 2

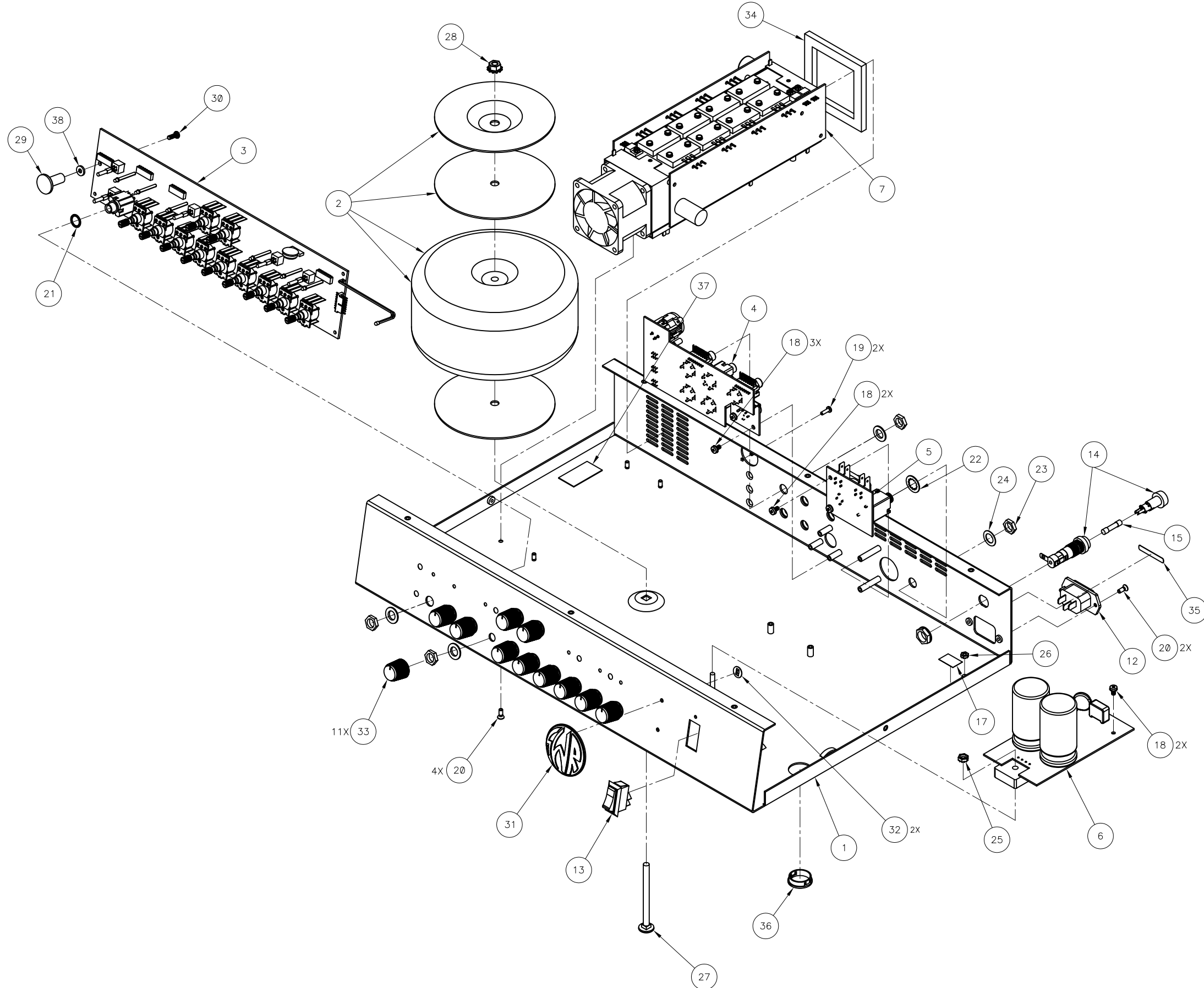
REVISIONS			
REV.	DESCRIPTION	DATE	APPROVED
A	PR673	15-SEP-05	S.M.B.



FILM/DWG: SERVICE DIAGRAM
 DATABASE: Z632P2.PCB DATE: 15-SEP-05

1. SEE SHEET 1 FOR TEST CONDITIONS & TEST POINT VALUES
 NOTES: (UNLESS OTHERWISE SPECIFIED)

THIS DOCUMENT CONTAINS INFORMATION OF A PROPRIETARY NATURE TO FENDER MUSICAL INSTRUMENTS AND IS SUBMITTED TO YOU IN CONFIDENCE AND SHALL NOT BE DISCLOSED OR TRANSMITTED TO OTHERS WITHOUT AUTHORIZATION FROM FENDER MUSICAL INSTRUMENTS.		 SWR Corona, CA U.S.A.	
CHECKED BY: _____ DATE: _____		TITLE: SERVICE DIAGRAM, COMBINED (PCB assy) WorkingPro AMPLIFIERS AUDIO I/O PCB	
APPROVED BY: _____ DATE: _____		SIZE B	DRAWING NUMBER 0069470000
DRAWN: G.McMillan ENGR: S.Bankhead	DATABASE FILE: Z632P2.PCB	RELEASE DATE: 15-SEP-05	REV. A SHEET 2 OF 2



SERVICE MANUAL DOCUMENT
02/13/2006

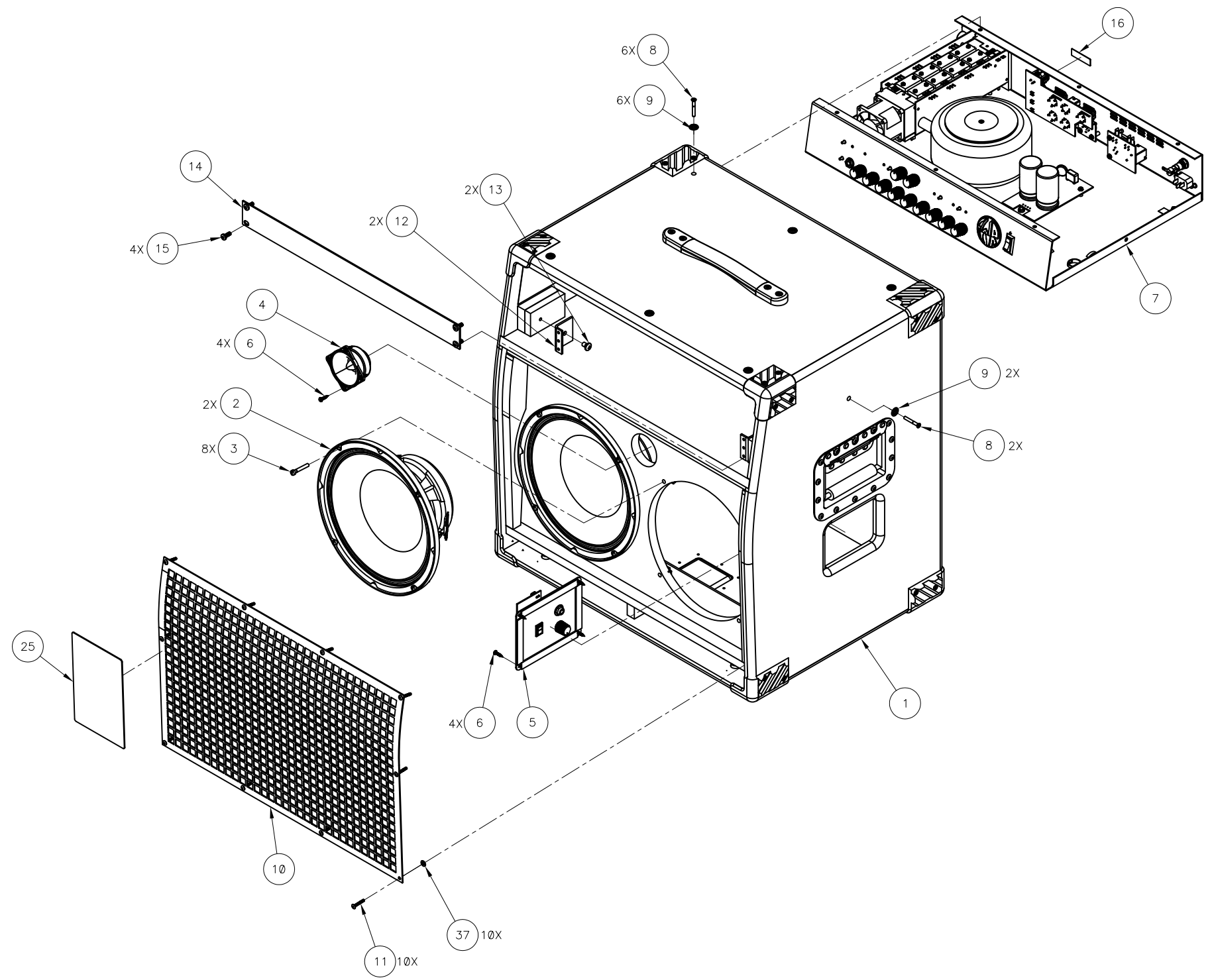
(N.S.) = NOT SHOWN

ITEM	QTY	DESCRIPTION
39		
38	1	WASHER FLAT #6 x 3/8 FIBER
37	1	LABEL FUSE REPLACEMENT
36	1	BUSHING SNAP SHORT 3/4X15/16 BLK
35	1	LABEL VOLTAGE
34	1	GASKET FOAM 4-SIDED SWR500/1000 PWR AMP
33	11	KNOB, BLACK PUSH-ON 18 TOOTH
32	2	SPEED NUT PUSH ON TYPE SMALL
31	1	BADGE SWR "HUBCAP" SMALL
30	1	SCRW PLASTITE 6x3/8 PHP BLX
29	1	STANDOFF .95" ADHESIVE
28	1	NUT KEP 1/4x20 FOJ
27	1	SCRW M 1/4-20X3" CAR BLX
26	1	NUT 6-32 HEX EXT LOCK
25	1	NUT KEPS #8-32 ZINC
24	1	WSHR FLAT 3/8x.614 NI (049)
23	1	NUT HEX 3/8-32x3/32 TK NI (049)
22	1	WASHER LCK INTL 3/8x.681x.032
21	1	WSHRLCKINTL 3/8x.500x.022 NI
20	6	SCRW M 6-32x3/8 FHP BLX W/NYLON PATCH
19	2	SCRW SMB #4X3/8 PHP BLX
18	7	SCRW M 6-32x1/4 PHP BLX ITLW
17	1	LABEL GROUNDING SEMKO
16	1	LABEL FUSE (N.S.)
15	1	FUSE
14	1	FUSE HOLDER
13	1	SWITCH, ROCKER
12	1	CONNECTOR AC LINE MALE IEC
11	1	CABLE ASSY CRIMP 9 CKT 20" BLK (N.S.)
10	1	CABLE ASSY CRIMP 8 CKT 18" GRN (N.S.)
9	1	CABLE ASSY CRIMP 8 CKT 21" RED (N.S.)
8	1	WIRESET CHASSIS WORKINGPRO 2x10C (N.S.)
7	1	MODULE ASSY SWR500 PWR AMP
6	1	PCB ASSY WORKINGPRO PWR SPLY
5	1	PCB ASSY SPKR OUT WORKINGPRO 2x10C
4	1	PCB ASSY WORKINGPRO I/O
3	1	PCB ASSY WORKINGPRO 2x10C
2	1	XFMR SWR 400 W AMPS
1	1	CHASSIS WORKINGPRO 2x10C
ITEM	QTY	DESCRIPTION

DATE 7/11/2005		Fender® FENDER MUSICAL INSTRUMENTS CORP. CORONA, CALIFORNIA U.S.A.	
DFT.	ENG.	ENG.	TITLE CHASSIS ASSEMBLY WORKINGPRO 2X10C
DATE	DATE	DATE	SHEET 1 of 1
APPROVED	SCALE NONE	SIZE D	DRAWING NUMBER 0069466000
DATE			REV. B
			MASTER ASSEMBLY

THIS DOCUMENT CONTAINS INFORMATION OF A PROPRIETARY NATURE TO FENDER MUSICAL INSTRUMENTS AND IS SUBMITTED TO YOU IN CONFIDENCE AND SHALL NOT BE DISCLOSED OR TRANSMITTED TO OTHERS WITHOUT AUTHORIZATION FROM FENDER MUSICAL INSTRUMENTS CORP.

REV EC NUMBER BY DATE/ARCHIVE



SERVICE MANUAL DOCUMENT

02/13/2006

(N.S.) = NOT SHOWN

ITEM	QTY	DESCRIPTION
37	10	WASHER SEAL # 8 ID x 3/8" OD
36		
35		
34		
33		
32		
31		
30		
29		
28		
27		
26		
25		
25		
24		
23		
22		
21		
20	1	CORD POWER (N.S.)
19		
18	1	CABLE WORKINGPRO MONITOR IN (N.S.)
17	1	WIRESET END ITEM WORKINGPRO 2x10C (N.S.)
16	1	LABEL SERIAL MEXICO
15	4	SCRW M 10-32x1/2 PHP BLX
14	1	RACK SPACE COVER 400 PRO
13	2	SCRW SMA 1/4x PHP BLX
12	2	RACK RAIL SINGLE
11	10	SCRW SMA 6x1 THP BLX
10	1	GRILLE WORKINGPRO 2x10C
9	8	WSHR FNSH 8-5/8 FLNGD BLX WX
8	8	SCREW M8-32x1-1/4 OHPS BLX WX
7	1	CHS ASSY WORKINGPRO 2X10C
6	8	SCRW SMA 6-x5/8 PHP BLX
5	1	PLATE ASSY MONITOR INPUT WORKINGPRO
4	1	TWEETER TLX-1
3	8	SCREW M10-32x1-1/4 FLHP STL BL
2	2	SPEAKER 10" WORKINGMAN'S 2X10C
1	1	CABINET ASSY WORKINGPRO 2x10C
ITEM	QTY	DESCRIPTION

Fender
FENDER MUSICAL INSTRUMENTS CORP.
CORONA, CALIFORNIA U.S.A.

DATE: 7/25/2005

TITLE: END ITEM ASSEMBLY WORKINGPRO 2X10C

DFT. ENG. ENG. DATE DATE DATE

APPROVED: SHEET 1 of 1, SCALE NONE, SIZE D, DRAWING NUMBER 4452600010, REV. B

DATE: MASTER/ASSEMBLY